



Laboratory & Sterilization
Technology



As humanity, we have always been inspired by nature in our discoveries and inventions that contribute to our development, throughout our journey that has been going on for hundreds of thousands of years on our planet. We followed the patterns of this unique planet we call Earth, the great system of nature on it, and the life skills of all living species, and we produced our knowledge with our own solutions. We have reached the point we have reached to today with our technology, which takes its roots from the Greek words knowledge (λογία) and skill (τέχνη). We found ways to pass on all we learned from generation to generation and shared our experiences. The more we share, the more we have reached an advanced level and we continue to progress every day.

As Nüve, we continue to be inspired by nature every day and to produce technological solutions to create a future in harmony with it. We believe that the simplest and most beneficial thing is found in nature, and that a humanity in harmony with its planet can establish the most correct and most beautiful future. We believe that you will find the traces of this unique planet and all the life on it in our every product and every innovation, and you will feel the same excitement as we do.



*

All kinds of lives.

If the climates are balanced, our environment is clean and untouched living spaces are allowed to survive, vitality is maintained for all kinds of lives.

Quality and Reliability

Quality and reliability are two indispensable concepts for NÜVE. NÜVE has built its production, working and service philosophy on these two concepts in its journey to become a world brand. We continuously endeavor for improvement of NÜVE, by combining our quality understanding with our devoted efforts. It is one of our main goals to make NÜVE a brand which you will be proud of choosing. We stay by you at all times with our experienced subject matter experts who have been employed at NÜVE for long.

Investment and Growth

We regularly invest in R&D, production, test technologies and human resources. We keep up with the technological innovations and allow for technology at every stage of our work. We allocate resources to our working environment, digitalization and machinery for offering more quality products and services. We believe in steady growth and keep on moving with firm steps thanks to our investments which we even did not suspend during the times of crisis.

Wide Area of Usage

Our products are designed to be used in many different industries. Hospitals, clinical research centers, dental clinics, biotechnology laboratories, agricultural research centers, veterinary medicine, food, beverage and dairy products industry, chemical, automotive, defense and pharmaceutical industries are the areas where NÜVE products are widely used.

Social Responsibility

We respond to training requests from schools and the industry with our training platform which we named "Nüvercity", in order to hand our knowledge down to future generations and support education of new generations in our country that set their heart on production.

Professional Support

With our competent sales and service staff, we as Nüve, are always by our customer's side. In order to provide our customers with uninterrupted and quick support, and being aware of the fact that training is an essential factor, we train our domestic and overseas dealers on our products and after-sales services on a regular basis.

Sustainability

We set out priority with a focus on the human development in any place we operate, taking into account the restrictions of natural ecosystems determined by UN Sustainable Development Agenda. We set our priorities that will contribute to the achievement of UN Sustainable Development Goals and shape our future with the contributions of our stakeholders. We will form the sustainability positioning of our company based on WEF Stakeholder Capitalism metrics and indicators, and achieve our targets for the future of our company with the faith and contributions of our employees with the Environmental, Social and Governance (ESG) sustainability approach.





EC 160 CO₂ INCUBATOR

EC 160 CO₂ Incubator is designed to be used in studies on cell culture such as bacteria, viruses and stem cells in medical, veterinary, pharmacy and science faculties of universities, as well as in vaccine and drug production facilities. EC 160 CO₂ Incubator is designed to protect your most valuable cultures by minimizing the risk of any contamination, with its one-piece cell with rounded corners, no indentations/protrusions including the shelf system, and natural air circulation. The control system of the incubator provides rapid recovery by preventing temperature and CO₂ fluctuations.

The advanced N-Smart™ control system helps the user to keep the set and working values under constant control. Thanks to the Wi-Fi connection and N-Mobile™ application offered as standard, temperature and CO₂ rate can be monitored via smartphone, regardless of time and place, and instant notification can be received in case of any adverse event.

It is possible to send emergency messages to 5 different users with the optional AlerText™ GSM alarm module, in addition to the audible and visual alarm system that keeps the security of the stored samples at the highest level. In addition, e-mails can be sent to 5 different users in case of alarm or malfunction using the standard Ethernet port.

Cell disinfection is possible thanks to the NüveDis™ 90°C important disinfection system offered as standard, and fast and reliable cell sterilization can be performed with the optional nUVeray™ UV lamp sterilization kit.

*

From the life... "Development"

Golden-mantled Tree Kangaroos, the mostly endangered species among all tree kangaroos, feed their babies with the breasts in their pouches and enable them to complete their postnatal development in their pouches.



EC 160 CO₂ INCUBATOR

- 95% ± 5% humidity level to maintain the pH balance of the samples
- Air jacketed heating system
- RaPIDcell™ control system providing fast temperature recovery
- Infrared (IR) sensor for CO₂ measurement
- 4.3" high resolution color LCD display
- Continuous display of set and actual values
- Internal memory that keeps the last 7 years' working records numerically in memory
- Instant display of work records graphically
- USB port for data transfer
- Remote access to running parameters, error history and memory with optional NüveCloser™ software over the internet via Ethernet port
- CO₂ measurement reset with Auto-Zero system
- 0.22 µm biological filter in cell, CO₂ gas line and auto-reset line
- Built-in gas regulator that keeps the CO₂ flow constant
- Wi-Fi connection for N-Mobile™ application for traceability and instant notifications
- Optional AlerText™ GSM alarm module
- Optional NuveWarn™ remote alarm system with 10 m. cable
- Optional nUVeRay™ UV light sterilization kit
- Optional Gas changeover unit for two CO₂ gas cylinders

EC 160

- Chamber volume: 160 liters
- Temperature range:
Ambient temperature +7°C to 50° C
- CO₂ range: 0% to 20.0%
- Seamless stainless steel chamber with rounded corners



DF / FR SERIES DEEP FREEZERS

The ultimate protection for your samples is ensured by placing the cooling coils inside the shelves to provide the most efficient heat extraction. No reliance on air convection to transfer energy to the walls of the freezer but transfer by conduction with DirectFREEZE™.

DF/ FR series DeepFreezers are powered by N-Smart™ which has internal memory storing temperature records up to ten years with one-hour intervals as digitally and graphically.

By means of Wi-Fi connection and N-Mobile™ application, DF series Deep Freezers can be traced anywhere and notification can be received instantly.

Sample safety is given top priority with audible and visual alarm system and optional NuveWarn™ remote alarm system, plus an optional AlerText™ text message to multiple mobile phones. Sending e-mail up to five e-mails addresses in case of any failure is offered as standard.

*

From the life... "Insulation"

A polar bear insulates its body temperature very well and keeps it inside, thanks to the substrate under its skin. Its thick fur protects it from the cold, its white appearance hides prey.



DF 290 / DF 490 / DF 590 -86°C FR 290 / FR 490 -41°C DEEP FREEZERS

- 4.3" color LCD display
- 5 language options (Turkish, English, French, Spanish, Russian)
- Color changing screen in case of error
- With standard N-Smart™ communication unit
 - Data transfer and software update via 1st USB port
 - Computer connection with 2nd USB port
 - Computer connection with Ethernet port and sending e-mail in case of errors
 - Computer connection with RS 232 port and using GSM alarm module
- Independent compartments with insulated covers reducing air intake which prevents icing
- Ideal compartment dimensions for the most used boxes
- Washable air filter for high performance and easy maintenance
- Surface heated gasket providing excellent sealing
- Stainless steel cell and aluminum shelves that accelerate heat transfer
- High density injected polyurethane insulation
- Superior cooling performance with renewed heat exchanger
- Locked and ergonomic door handle that prevents unauthorized access
- Quick recovery after opening and closing the door
- By the means of the automatically charging battery display of chamber temperature, audible and visual alarm system in case of power failure.
- Standard port for central alarm connection
- Optional NuveCloser™ software access to operating parameters, error history and memory
- Optional weekly circular temperature recorder
- Optional AlerText™ GSM alarm module
- Optional NüveWarn™ remote alarm system

DF 290 / 490 / 590

- Three different volumes: 261, 461 and 560 liters
- Temperature range: -55°C to -86°C
- Direct and rapid cooling from inside the chamber with DirectFREEZE™ technology
- Optional CO₂ supply unit

FR 290 / 490

- Two different volumes: 261 and 461 liters
- Temperature range: -25°C to -41°C
- Direct and rapid cooling from inside the chamber with DirectFREEZE™ technology



INCUBATORS

Excellent incubation conditions are provided by this series of EN Incubators for applications in biology and microbiology laboratories such as medical and veterinary fields, research and quality control examinations in pharmaceutical, food and cosmetics industries and biotechnology. Precise temperature control, ensuring that your samples remain in a stable environment, is achieved.

Natural air convection minimizes cross-contamination and optimises the quality of results.

Programmable N-Prime™ control system preventing drift and offering fast temperature recovery after door opening. To ensure traceability, incubation processes can be transferred to external memory via USB output.

*

From the life... "Continuity"

The spawning time of caretta caretta takes hours. Mother caretta caretta camouflages the pit where she lays her eggs and the baby caretta caretta complete their development under the most favorable conditions.



EN 055 / 120 & EN 400 / 500 INCUBATORS

- Very homogeneous temperature distribution by natural air convection: Minimum turbulence and no cross contamination
- Frameless inner glass door for observation of the samples without any temperature drop
- Adjustable ventilation system
- Reliable and accurate N-Prime™ programmable PID microprocessor control system
- Highly visible dual displays for temperature and time
- Easy programming with one button, just turn and push
- Password protected menu to secure the operation
- Programmable alarm limits
- Data recording on memory stick by means of USB port up to 125 days
- Programmable delayed start function
- Adjustable independent safety thermostat which takes over control in case of any failure

EN 055 / 120

- Two different sizes: 55 lt and 120 lt
- Programmable temperature range : Ambient +5 °C / 99,9 °C
- Stainless steel chamber



EN 400 / 500

- Two different sizes: 48 lt and 120 lt
- Programmable temperature range: Ambient +5 °C / 80 °C
- Anodic-oxidated aluminium chamber





COOLING INCUBATORS

ES 120 / ES 252 Cooling Incubators are designed for freezing, incubation, drying, different types of tests and long storage in the fields of biology, zoology, veterinary, botany and the quality control and R&D laboratories in industries such as pharmaceutical, food and cosmetics.

With programmable Microprocessor N-Smart™ Control System the precise temperature control required by the samples is provided. With this system, temperature fluctuations are prevented and temperature recovery is realized in the most sensitive and fast way after the door is opened and closed.

N-Smart™ control system has many important features. There are 20 program memories and 20 different steps can be set for each program. By means of the internal memory of N-Smart™ temperatures records with one-hour intervals can be stored up to ten years as digitally and graphically.

ES 120 / 252

COOLING INCUBATORS

- Maximum information with highly visible 4,3" colourful LCD display
- With 5 language option: Turkish, English, French, Russian, Spanish
- Color changing screen in case of error
- Possibility of repeating each program up to 99 times
- Stainless steel chamber
- High density injected polyurethane insulation
- Powerful air circulation system providing excellent temperature distribution and stability even at low temperatures
- Automatic defrost system
- Large window on the door consisting of triple glass for perfect insulation and interior lightening
- Optional NuveCom™ communication unit which includes 2 pcs. USB port for data storage and PC, ethernet port for remote access through internet and RS 232 outlet
- Optional NuveCloser™ software to access the operating parameters, failure history, memory and other technical parameters
- Optional AlerText™ GSM alarm module
- Optional Wi-Fi connection for N-Mobile™

ES 120 / 252

- Two different sizes: 123 lt and 253 lt
- Programmable temperature range: 10°C / +60°C
- Stainless steel chamber



DRY HEAT STERILIZERS

FN series Dry Heat Sterilizers are used for sterilization of heat resistant solid materials used in medicine, dentistry and veterinary medicine. It is also used for drying, heating, heat treatment and long-term stability tests in research and industrial laboratories.

With its advanced N-Prime™ microprocessor control system and PID temperature management, FN series offer very precise, constant temperature. With this system, temperature fluctuations are prevented and temperature recovery is realized in the most sensitive and fast way after the door is opened and closed.

During sterilization, the equipment warns the user in situations that may risk sterilization due to reasons such as power cuts.

*

From the life... "Purification"

The oils secreted by the Steller's Eider give the surface of its feathers a hydrophobic feature (feathers repel water molecules electrostatically). Thanks to this feature, the eider can swim without getting their skin wet and with low friction.



FN 055 / 120 & FN 400 / 500 DRY HEAT STERILIZERS

- Very homogeneous temperature distribution by natural air convection
- The door, pressing firmly and tightly on the chamber gasket, to reduce temperature loss
- Adjustable outlet port for vapor exhaustion
- Highly visible dual displays for temperature and time
- Easy programming with one button, just turn and push
- Password protected menu to secure the operation
- Programmable alarm limits
- Data recording on memory stick by means of USB port up to 125 days
- Programmable delayed start function
- Adjustable independent safety thermostat which takes over control in case of any failure

FN 055 / 120

- Two different sizes: 55 lt and 120 lt
- Programmable temperature range: 70°C / 250°C
- Stainless steel chamber



FN 400 / 500

- Two different sizes: 48 lt and 120 lt
- Programmable temperature range: 70°C / 250°C
- Anodic-oxidated aluminium chamber



OVENS

FN and KD series Ovens are used for drying, heating, warming, heat treatment and long-term stability tests in research and industrial laboratories. The stainless steel interior of FN and KD series ovens are resistant to many chemicals.

With its advanced N-Prime™ microprocessor control system and PID temperature management, FN series offer very precise, constant temperature. With this system, temperature fluctuations are prevented and temperature recovery is realized in the most sensitive and fast way after the door is opened and closed.

*

***From the life...
"Durability"***

Coastal Iris, whose homeland is said to be Asia, needs very dry conditions to survive. It is rarely grown as an ornamental plant, in mild climate conditions.



FN 400P / 500P & KD 200 / 400 OVENS

- Homogeneous temperature distribution by means of forced air circulation
- Easy to clean stainless steel chamber
- The door, pressing firmly and tightly on the chamber gasket, reduces temperature loss
- Adjustable outlet port for vapor exhaustion
- Highly visible dual displays for temperature and time
- Easy programming with one button, just turn and push
- Password protected menu to secure the operation
- Programmable alarm limits
- Data recording on memory stick by means of USB port up to 125 days
- Programmable delayed start function
- Adjustable independent safety thermostat which takes over control in case of any failure

FN 400P / 500P

- Two different sizes: 42 lt and 110 lt
- Programmable temperature range: 70°C / 250°C
- Stainless steel chamber



KD 200 / 400

- Two different sizes: 191 lt and 371 lt
- Programmable temperature range: 70°C / 250°C
- Dehumidification fan, which can be operated at any time and fan speed can be adjusted for applications with high humidity



CENTRIFUGES

Tabletop Centrifuges are designed to meet the centrifuge needs of laboratories where multiple applications are carried out together. These models, which are easy to use with their N-Prime™/ N-Wise™ microprocessor control system and large digital display that provide sensitive operation, are designed to use in hospitals, universities, institutes and industrial laboratories.

NF 048 provides an ideal operation with its microliter rotor and haematocrit rotor options.

NF 200 is ideal for clinical laboratories. Despite its small size, it prepares samples for analysis by spinning the most used tubes.

Medium capacity NF 400 / NF 400R ventilated and refrigerated centrifuges are ideal for general applications. Many needs of laboratories are met with the swing out, angle and microplate rotors used in the equipment.

Multipurpose centrifuges NF 800 / NF 800R and NF 1200 / NF 1200R ventilated and refrigerated models are ideal for low and high speed applications. Various applications can be made in a single equipment with swing out, angle, microliter and microplate rotors used in the equipment.

NF 3000R refrigerated centrifuge is ideal for laboratories requiring high capacity. In addition to the quadruple blood bag, tubes of different capacities can be centrifuged in the same equipment.

*

***From the life...
"Speed"***

*Running at a speed of 113 km / hr
Cheetahs can reach a speed of almost 96
km in 3 seconds, and their body
temperature can rise up to 41°C.*



NF 048 MICROLITER & HAEMATOCRIT CENTRIFUGE NF 200 SMALL CAPACITY BENCHTOP CENTRIFUGE

- N-Prime™ programmable microprocessor control system for accurate and reliable operations
- Easy programming with one button, just turn and push
- Two large LED displays for speed/RCF and time
- Possibility of programming RCF
- Pulse key for short centrifugation requirements
- Reducing temperature increase in the chamber by means of continuous air cooling through air channel in the lid
- Quiet brushless induction drive motor
- Epoxy-polyester Powder Coated Steel body, lid and chamber
- Safety ensured by steel body, lid and chamber, lid locking system and motor over-temperature protection



NF 048

	Angle Rotor	Haematocrit Rotor
Maximum Capacity	24x1,5/2 ml	24xcapillary tubes
Maximum Speed	14.000 rpm	12.000 rpm
Maximum RCF	18.188xg	14.811xg

NF 200

	Angle Rotor
Maximum Capacity	12x15 ml
Maximum Speed	6.000 rpm
Maximum RCF	4.065xg



NF 400 / NF 400R MEDIUM CAPACITY, NF 800 / NF 800R & NF 1200 NF 1200R MULTI PURPOSE BENCHTOP CENTRIFUGES

- N-Prime™ programmable microprocessor control system for accurate and reliable operations
- Easy programming with one button, just turn and push
- Programmable parameters: Program no, speed / RCF, time, acceleration and braking rates and temperature for NF 400R, NF 800R and NF 1200R
- Four large bright LED displays for programmable parameters
- Programming option as speed or RCF
- Pulse key for short centrifugation requirements
- Ability to see centrifuge force of the running speed
- Timer: 1 - 99 minutes with hold position
- 10 program memories
- 10 acceleration / 10 braking rates
- Stainless steel chamber
- Electronic imbalance detection system
- Wide range of accessories to accommodate most manufacturers' tubes and microtitre plates
- Powerful, quiet, maintenance-free induction motor
- Observation window for speed measurement
- Minimum temperature increase in the chamber by means of ventilation system
- Temperature control between -9°C / +40°C for refrigerated models
- Totally CFC free refrigerant fluid and insulation material for refrigerated models



NF 400 / NF 400R

	Swing-out Rotors		Angle Rotors	
Maximum capacity	4x100 ml	2xM.Plate	16x15 ml	30x15 ml
Maximum speed	4.100 rpm	4.100 rpm	4.100 rpm	4.100 rpm
Maximum RCF	2.819xg	2.011xg	2.142 xg	2.443 xg



NF 800 / NF 800R

	Swing-out Rotors		Angle Rotors		
Maximum capacity	4x200 ml	2x3 M. Plate	6x50 ml	30x15 ml	24x1,5/2 ml
Maximum speed	4.100 rpm	4.100 rpm	9.000 rpm	4.100 rpm	14.000 rpm
Maximum RCF	3.045xg	2.349xg	9.418xg	3.007xg	18.405xg



NF 1200 / NF 1200R

	Swing-out Rotors		Angle Rotors			
Maximum capacity	4x280 ml	2x3 M.plate	6x100 ml	10x15 ml	30x1,5/2 ml	24x1,5/2 ml
Maximum speed	4.100 rpm	4.100 rpm	9.000 rpm	12.000 rpm	13.500 rpm	14.000 rpm
Maximum RCF	3.082xg	2.349xg	8.965xg	16.824xg	20.170xg	18.405xg

NF 3000R HIGH CAPACITY REFRIGERATED BENCH TOP CENTRIFUGE

- N-Wise™ Programmable Microprocessor Control for accurate and reliable operations
- Smart control system with 7" 800x400 pixel colourful touch screen
- Programming option as speed or RCF
- Pulse key for short centrifugation requirements
- Ability to see centrifuge force of the running speed
- 1-99 minutes with hold position
- 99 customizable programs and pre-cooling program
- 10 acceleration / 10 braking rates
- Stainless steel chamber
- Electronic imbalance detection system
- Wide range of accessories to accommodate most manufacturers' tubes and microtitre plates
- Powerful, quiet, maintenance-free induction motor
- Equipped with Wi-Fi connection
- USB port to record data of operated programs
- Motorized lid locking
- Ventilation system to prevent heating up the samples
- Observation window for speed measurement
- Temperature control between -10°C / +40°C
- Totally CFC free refrigerant fluid and insulation material



NF 3000R

	Swing-out Rotor
Maximum capacity	4x750 ml
Maximum speed	4.600 rpm
Maximum RCF	4.637xg

NF 1200RN

ENVIRONMENTALLY FRIENDLY, MULTI-PURPOSE REFRIGERATED TABLE TOP CENTRIFUGE



- The NF 1200RN is an innovative table-top centrifuge that combines low and high speed applications in a single device, and can be used in a wide range of applications from hospitals to university laboratories, from biotechnology research to drug development and quality control processes.
- Working with the new generation R290 natural refrigerant, the NF 1200RN is an excellent solution for sustainable laboratory applications with its environmentally friendly structure.

- N-Prime™ control system with programmable microprocessor for accurate and reliable results
- Wide range of tube compatibility from 0.2 ml to 280 ml with 6 different rotor options
- 4x280 ml capacity swing-out rotor offering different godet options for the most commonly used tubes
- 2x3 plate capacity swing-out microplate rotor
- 6x100 ml, 10x15 ml, 30x1.5/2 ml and 24x1.5/2 ml capacity angle-rotors for applications requiring high speed
- Offering maximum cooling performance with minimum amount of refrigerant, both energy saving and environmentally friendly use
- The safety of biological samples is ensured thanks to the powerful cooling system that can be programmed between -9°C and +40°C.
- R290 natural refrigerant
- Safe working environment provided by positioning the gas line and electronic components in separate sections
- CFC-free insulation material
- Easy programming thanks to the turn-and-press button
- Code basket option with transparent leak-proof cover that provides protection against pathogens and harmful samples
- Electronic unbalance detector that stops operation in case of unbalanced loading



NF 1200 RN

	Swing-out Rotors		Angle Rotors			
Maximum capacity	4x280 ml	2x3 M.plate	6x100 ml	10x15 ml	30x1,5/2 ml	24x1,5/2 ml
Maximum speed	4.100 rpm	4.100 rpm	9.000 rpm	12.000 rpm	13.500 rpm	14.000 rpm
Maximum RCF	3.082xg	2.349xg	8.965xg	16.824xg	20.170xg	18.405xg

WATER BATHS

NB / BM / ST series Water Baths are used in medical, veterinary, pharmacy, science, agriculture, engineering faculties and institute laboratories of universities, as well as in research and quality control units in the pharmaceutical, cosmetics, food, chemical industry. It is designed for use in many general and special applications in microbiology, research and industrial laboratories.

The precise temperature control required is provided by the N-Prime™ control system with a programmable PID microprocessor.

*

From the life... "Adaptation"

Resembling a soft flower garden when they are at the bottom of the sea, the corals dry harden when they are out of the water. Thus, they become stones suitable for processing.



NB 9 / 20, BM 30, ST 30 & BS 30 WATER BATHS

- Stainless steel tank
- Programmable alarm limits
- Programmable delayed start
- One-piece tank with rounded corners and smooth surface, made of corrosion-resistant stainless steel
- Reinforced insulation to prevent heat losses
- Practical drainage system that allows the water in the tank to be drained easily
- Various tube and flask carrier options

NB 9 / 20 UNSTIRRED WATER BATHS

- Two different usable volumes: 7 and 15 liters
- Temperature range: Ambient temperature +5°C to 99.9°C
- N-Prime™ programmable PID microprocessor control system providing precise temperature control
- Two separate digital displays for temperature and time
- Easy programming with one button, just turn and push
- USB port for saving up to 125 days of work on external memory



BM 30 CIRCULATED WATER BATH

- Usable volume: 17 liters
- Temperature range: Ambient temperature +5°C to 99.9°C
- N-Prime™ programmable PID microprocessor control system providing precise temperature control
- Two separate digital displays for temperature and time
- Easy programming with one button, just turn and push
- USB port for saving up to 125 days of work on external memory





BS 30

REFRIGERATED WATER BATH

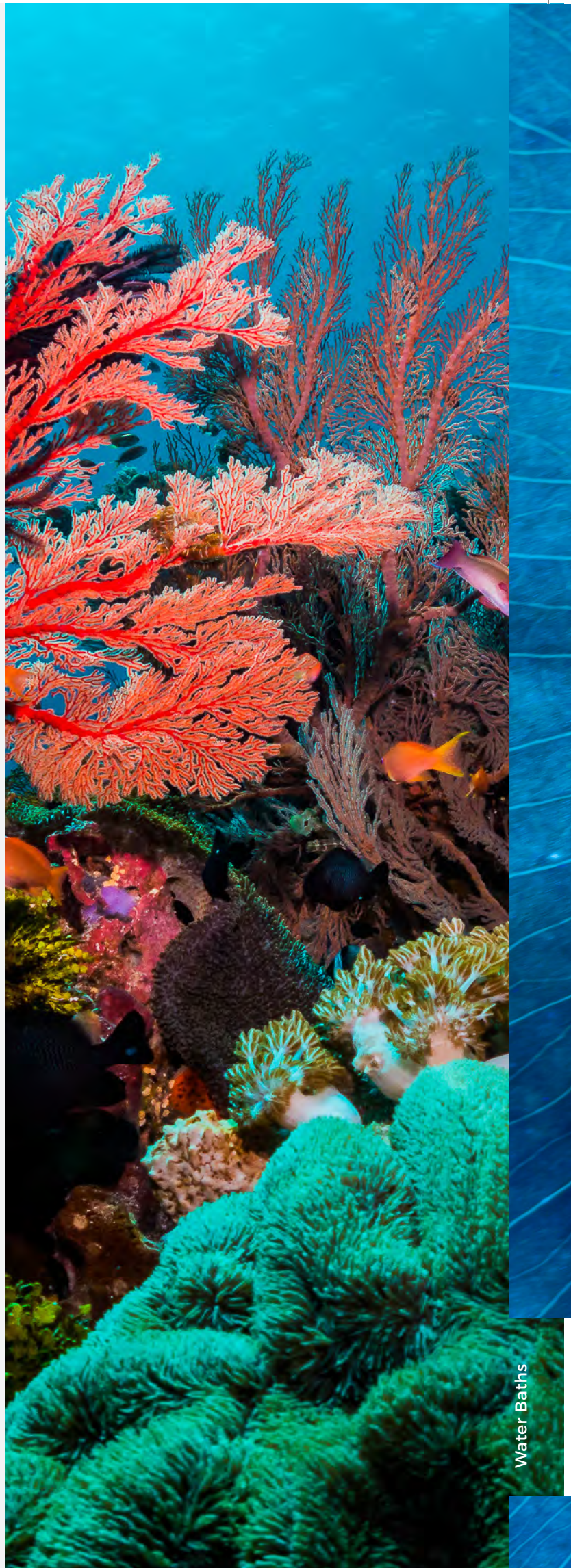
- Usable volume: 17 liters
- Temperature range: 0°C to 80°C
- N-Smart™ control system with programmable microprocessor with 4.3" color LCD display
- 5 language options (Turkish, English, French, Spanish, Russian)
- Internal memory that stores the last ten years' work records numerically and graphically
- Color changing screen in case of error
- 20 program memories that can be programmed with 20 steps
- Possibility to repeat the program 99 times
- With optional N-Smart™ communication unit
- Data transfer and software update via 1st USB port
- Computer connection with 2nd USB port
- Computer connection with Ethernet port and sending e-mail on errors
- Computer connection with RS 232 port and possibility to use GSM alarm module
- Optional NuveCom™ communication unit which includes 2 pcs. USB port for data storage and PC
- Optional NuveCloser™ software to access the operating parameters, failure history, memory and other technical parameters
- Optional Wi-Fi connection for N-Mobile™
- Optional external circulation
- Optional Wi-Fi connection for N-Mobile™ application for traceability and instant notifications



ST 30

SHAKING WATER BATH

- Tank volume: 29 liters
- Temperature range: Ambient temperature +5°C to 99,9°C
- Programmable shaking speed between 250 rpm
- N-Prime™ programmable PID microprocessor control system providing precise temperature control
- Two separate digital displays for temperature and time
- Easy programming with one button, just turn and push
- USB port for saving up to 125 days of work on external memory
- Possibility to use different type of tubes, flasks or erlenmeyers with wide range of accessories.



WATER DISTILLERS

Distilled water can be used to prepare buffer solutions in laboratories as well as for microbiological and analytical studies.

Inlet water heated in Water Distillers is transferred to the boiler. In this way, energy savings are achieved by reducing the boiling time and operating costs are reduced.

Thanks to the boilers made of stainless steel and the seamless stainless steel heaters, the devices can be used safely for years.

Safe operation is provided by the microprocessor control system. There is a warning system against the lack of water in the boiler.

*

***From the life...
"Balance"***

Rainforests, housing more than half of the living species in the world, are the source of the oxygen we breathe and many of the products we use in our daily lives.

ND 4/12 & NS 103 WATER DISTILLERS

- Heaters protected against running dry without water
- Long life stainless steel heater
- Boiling tank, storage tank and condenser made of stainless steel
- CO₂ degassing through the gas exhaust pipe

ND 4 / 12

- Two different distilled water capacities: 4 and 12 lt/h
- Distilled water storage tank capacity: ND 4: 8 liters, ND 12: 24 liters.
- Suitable for bench and wall mounting
- Fully automatic operation with microprocessor control system
- Siliphos cartridge filter to decrease calcification on the heaters
- Water supply controlled by the solenoid valve which stops the water flow when the distilled water tank is full and the distillation is re-started when water tank is withdrawn
- Safety system and warning leds for: High water pressure, low water pressure, heater failure, half full storage tank, full storage tank
- Energy saving re-using a certain amount of heated water



NS 103

- Distilled water capacity: 3,5 lt/h
- Wall mounted type.
- Designed to produce distilled water economically and rapidly
- Heaters protected against running dry without water
- Warning led for low water level
- Manometer to adjust and control the inlet water pressure



REFRIGERATOR

MD 120 Medical Refrigerator is specially produced to safely store medicines, vaccines and pharmacological products that are heat sensitive and need to be stored in a cold environment should not be stored in ordinary refrigerators that do not provide the correct temperature distribution and stability.

In order to provide ideal storage conditions, the cell and body of the kit storage cabinets are made of stainless steel and supported by high-density polyurethane insulation material. The powerful cooling system, which provides very good temperature distribution and stability, also reduces recovery times after the door is opened and closed, helping to maintain storage conditions.

MD 120 Medical Refrigerator is powered by N-Smart™ which has internal memory storing temperatures records up to ten years with one hour intervals as digitally and graphically. By means of Wi-Fi connection and N-Mobile™ application, MD 120 Medical Refrigerator can be traced anywhere and notification can be received instantly.

MR series Laboratory Refrigerators are designed for the storage of heat sensitive products used in hospitals, laboratories, pharmacies, blood banks, research centers and universities providing optimum storage conditions.

The device has a double glazed door with plastic frame with excellent heat insulation for monitoring the samples and stainless steel wire shelves that do not prevent air circulation. MR Series have digital display and the internal surface structure is ABS. LED interior lighting helps to monitor the samples inside.

*

***From the life...
"Protection"***

Standing out with their star-like shape and patterns on their skin, Banggai Cardinal Fish males carry their juveniles by incubating in their mouths and protect them from external predators.



MD 120 MEDICAL REFRIGERATOR

- Advanced technology to store drugs, vaccines, pharmaceutical and medical products.
- 4,3" colourful LCD display
- High density injected polyurethane insulation
- Door with magnetic seal and lockable to prevent unauthorized access
- Chamber illumination with switch control
- Powerful air circulation system to maintain temperature uniformity and stability on all shelves
- Fully automatic defrost system to maintain cooling coil efficiency
- Mains power switch key with lock
- Remote alarm outlet and standard outlet for central alarm system
- N-Smart™ control system
 - 1.USB port for data transfer and software update
 - 2.USB port for data storage and PC.
 - Ethernet port for remote access through internet and sending e-mails with the details of the failure
 - RS 232 port for access through internet and GSM alarm module
- Optional NuveCloser™ multi software
- Optional NuveCloser™ software to access the operating parameters, failure history, memory and other technical parameters
- Optional AlerText™ SMS alarm system for ultimate security
- Optional battery operated 7-day chart recorder
- Optional panel type thermal printer
- Optional NuveWarn™ remote alarm system
- Optional Wi-Fi connection for N-Mobile™ application for traceability and instant notifications

MD 120

- Volume: 269 lt
- Temperature range: 0°C / +10°C
- Stainless steel chamber
- Temperature measurement from a liquid which has similar thermal specifications with blood



MR 120

LABORATORY REFRIGERATOR

- MR 120 Laboratory Refrigerator can be used in various fields such as pharmaceutical production, hospital laboratories
- It is an ideal solution for the safe and controlled storage of reagents, test kits, vaccines, cultures, and other temperature-sensitive laboratory materials.
- Accurate and reliable temperature control for samples
- Visual warning system for temperature deviations
- Visual alarm for open door status
- Lock system for the security of stored materials
- Programmable microprocessor control system
- Durable and easy-to-clean ABS Interior Surface
- Optimized storage with plastic-coated adjustable wire shelves
- Adjustable space for samples of different sizes
- Easy cleaning in accordance with laboratory standards
- Transparent design reducing the need for frequent opening and closing
- High-Density Polyurethane Insulation
- Low energy consumption with optimum insulation

MR 120

- Volume: 382 lt
- Temperature range: 1°C / +9°C
- Double glazed glass door with plastic frame
- LED interior lighting



BLOOD BANK REFRIGERATOR

KN 120 Blood Bank Refrigerator provides safe and effective storage of blood and blood products by measuring temperature from liquid with the same properties as blood.

KN 120 Blood Bank Refrigerator is powered by N-Smart™ which has internal memory storing temperatures records up to ten years with one hour intervals as digitally and graphically. By means of Wi-Fi connection and N-Mobile™ application, KN 120 Blood Bank Refrigerator can be traced anywhere, and notification can be received instantly.

The device has a door window consisting of 3 layers of glass with excellent thermal insulation for monitoring blood and blood products, and shelves with drawers with plexiglass protection in front of them, which ensure the vertical placement of blood bags and keep the temperature increase of blood products at minimum levels during the opening and closing of the door. There are separators in the drawer that allow the blood bags to be placed at an angle for easy reading of the bag labels.

In case of power cut, heat change, open door and other alarm situations that may occur in the device, the alarm system, which is fed for by a battery with automatic charging feature, warns the user both audibly and visually for 12 hours.

*

From the life... "Remedy"

The slow-growing and evergreen Dragon Blood Tree is eye-catching with its fantastic appearance. The red sap secreted by the tree protects itself from infection when its bark is cut and has disinfection and wound healing features.



KN 120 BLOOD BANK REFRIGERATOR

- Advanced technology to store blood and blood components
- 4,3" colourful LCD display
- High density injected polyurethane insulation
- Door with magnetic seal and lockable to prevent unauthorized access
- Chamber illumination with switch control
- Powerful air circulation system to maintain temperature uniformity and stability on all drawers
- Fully automatic defrost system to maintain cooling coil efficiency
- Mains power switch key with lock
- Remote alarm outlet and standard outlet for central alarm system
- N-Smart™ control system
 - 1.USB port for data transfer and software update
 - 2.USB port for data storage and PC
 - Ethernet port for remote access through internet and sending e-mails with the details of the failure
 - RS 232 port for access through internet and GSM alarm module
- Optional NuveCloser™ multi software
- Optional NuveCloser™ software to access the operating parameters, failure history, memory and other technical parameters
- Optional AlerText™ SMS alarm system for ultimate security
- Optional battery operated 7-day chart recorder
- Optional panel type thermal printer
- Optional NuveWarn™ remote alarm system
- Optional Wi-Fi connection for N-Mobile™ application for traceability and instant notifications

KN 120

- Capacity: 120 blood bags
- Temperature range: 0°C / +10°C
- Stainless steel chamber
- Temperature measurement from a liquid which has similar thermal specifications with blood



PLATELET INCUBATOR

Designed to accept PS 54 Platelet Agitator, PN 150 Platelet Incubator has been built to provide long service to blood banks.

PN 150 Platelet Incubator has large triple glass door window for perfect insulation and easy observation of blood bags. Their rugged construction in stainless steel is combined with high density polyurethane insulation for platelet protection. Efficient cooling and fast temperature recovery after door opening optimize this protection.

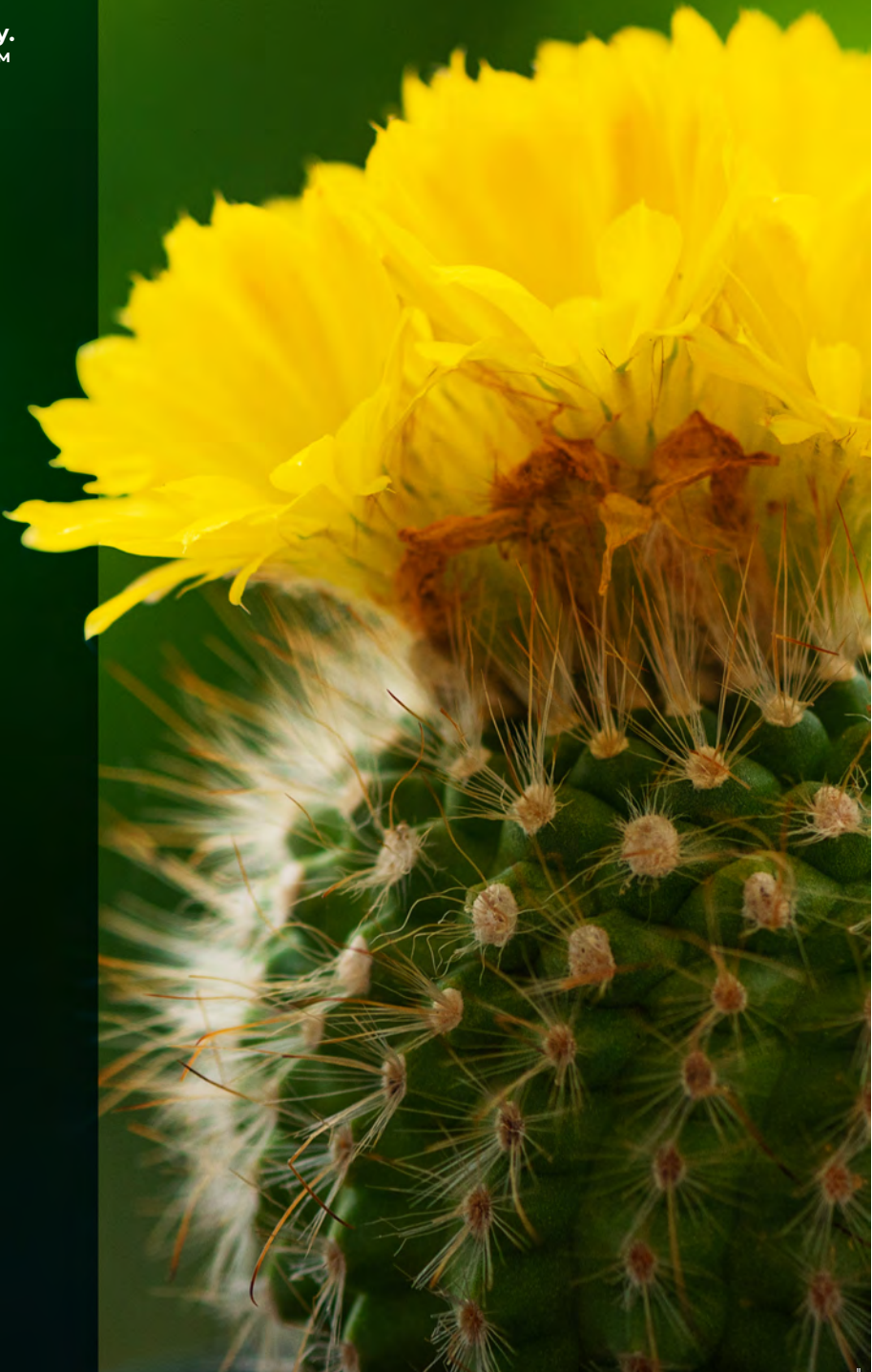
PN 150 Platelet Incubator is powered by N-Smart™ which has internal memory storing temperatures records up to ten years with one-hour intervals as digitally and graphically. By means of Wi-Fi connection and N-Mobile™ application, PN 150 can be traced anywhere and notification can be received instantly.

Sample safety is given top priority with audible, visual, open door and optional NuveWarn™ remote alarm system, plus an optional AlerText™ text message to multiple mobile phones. Sending e-mail up to five e-mail addresses in case of any failure is offered as standard. Alarms are independently powered by a permanently recharged battery.

*

From the life... "Comfort"

The Golf Ball Cactus, named so because of resembling a golf ball, stays cool in summer and warm in winter by means of the spines surrounding it.



PN 150 PLATELET INCUBATOR

- 4,3" high resolution colourful LCD
- High density injected polyurethane insulation
- Door with magnetic gasket and key lock for protection against unauthorized access
- Chamber illumination
- Excellent temperature uniformity and stability with powerful air circulation system
- Mains power switch key with lock
- Remote alarm outlet and standard alarm outlet for central alarm system
- N-Smart™ control system
 - 1.USB port for data transfer and software update
 - 2.USB port for data storage and PC
 - Ethernet port for remote access through internet and sending e-mails with the details of the failure
 - RS 232 port for access through internet and GSM alarm module
- Optional NuveCloser™ multi software
- Optional NuveCloser™ software to access the operating parameters, failure history, memory and other technical parameters
- Optional AlerText™ SMS alarm system for ultimate security
- Optional battery operated 7-day chart recorder
- Optional NuveWarn™ remote alarm system
- Optional panel type thermal printer
- Optional Wi-Fi connection for N-Mobile™ application for traceability and instant notifications

PS 54 PLATELET AGITATOR

- Specially designed for platelet bags
- 9 pcs. stainless steel shelves
- Low noise operation
- Shelves and body made of stainless steel
- Maximum homogeneity with mesh type shelves for air circulation
- Easy access to platelet bags on pull-out shelves
- Ergonomic shelf design
- Audible alarm if motion is not detected

PN 150

- Chamber capacity: 146 Lt
- Temperature range: 20°C to 35°C
- Stainless steel chamber
- Capacity: 54 platelet bags on 1 pc. PS 54 Platelet Agitator



PS 54

- Shaking speed: 60 strokes / min
- 54 pcs platelet bags



CLASS II MICROBIOLOGICAL SAFETY CABINETS AND LAMINAR AIR FLOW CABINET

MN Series Microbiological Safety Cabinets are designed for all operations with microorganisms that are harmful and have an uncertain level of harm, offering a high level of protection for the user, the environment and the product. It can be used in microbiology, biotechnology, medicine, food, hospital and university laboratories and in many areas where user, environment and product protection are required.

LN 120 Laminar Air Cabinet is designed to offer a high level of sample protection and to work with harmless samples. Ideal for cell and tissue culture studies.

The cabins offer a comfortable working experience to their users, thanks to the powerful lighting that does not tire the eyes and the fan system with a very low noise level. There is a microprocessor control system that automatically fixes the air speed at the standard value of 0.4 m/s.

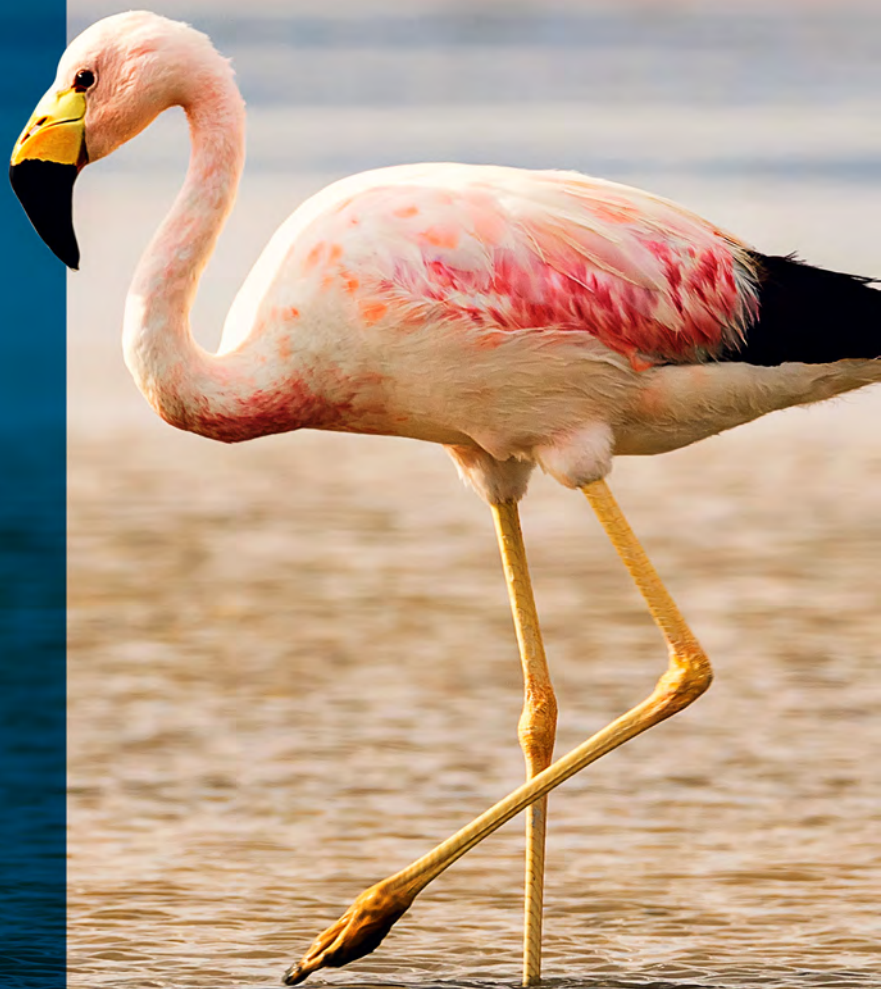
There is an audible and light alarm system for any changes and malfunctions in working conditions.

70% of the filtered air supplied to the working area is recirculated, prolonging the life of the HEPA filter.

*

From the life... "Selectivity"

The Andean Flamingo has a deep-keeled beak. The upper jaw is narrower than the lower jaw, forming a gap on the upper surface of the beak. This mechanism causes food particles denser than water to affect the filtering surface in the beak, allowing water to flow through the mouth, thereby allowing diatoms (a kind of algae) to remain and feed in the flamingo beak.



MN 090 / 120

CLASS II MICROBIOLOGICAL SAFETY CABINETS

- Two models with different working table widths: MN 090: 89 cm, MN 120: 119 cm
- Stainless steel and removable worktable in three parts for easy decontamination
- Two HEPA filters with 99,995 % efficiency for particles $\geq 0,3 \mu\text{m}$
- Automatic Speed Compensation for raising filter resistance
- Mains power switch with key lock
- Alarms for power failure, control system failure, open window, low and high air flow speed, clogged filters
- Perfect air tightness of window seal by means of gas spring assisted window
- Smooth chamber walls and rounded corners without soldering for easy cleaning and decontamination
- DOP test inlet, elapsed time counter and 2 pcs. of power socket as standard
- EN 12469 standard
- Optional front enclosure with UV light, support stand, gas (with solenoid) and vacuum valve



CS 120

CLASS II MICROBIOLOGICAL SAFETY CABINETS (MOTORIZED WINDOW)

- Stainless steel and removable work tray in three parts for easy decontamination
- Motorized window featuring silent and precise control, designed for user comfort and safety
- Two HEPA filters with 99,995 % efficiency for particles $\geq 0,3 \mu\text{m}$
- Automatic speed compensation system against clogged filter
- Recirculated HEPA filtered air to prolong the lifetime of HEPA filters
- Continuously controlled airflow speed which is always kept at $0,36 \pm 20\%$ m/sec
- Smart sensor system that instantly monitors air speeds and protects a safe working environment with visual and audible warnings in case of deviation
- 5" color touch LCD to easily monitor air flow rate
- Easy and fast operation thanks to the N-Smart™ control system
- TS EN 12469 certified



LH SERIES HORIZONTAL LAMINAR AIR FLOW CABINETS

- Two models with different working table widths
- Stainless Steel Work Surface: One-piece, easy-to-clean surface
- Motorized sliding cover system
- HEPA Filter: Retains particles larger than $0.3\ \mu\text{m}$ with 99.995% efficiency
- D.O.P. Test Port: Provides the ability to verify filter performance
- Clear Vision: Always bright and clear working area
- N-Flow™ airflow control system
- 5" touch TFT LCD screen
- 6 Programmable Air Speeds: Options include 0.20 / 0.25 / 0.30 / 0.35 / 0.40 / 0.45 m/s
- GreenTech Centrifugal Fan: Lubrication-free, dual-inlet design
- Quiet Operation: Noise level below 60 dB
- UV resistant polycarbonate glass
- Battery System for Movable Glass Control: Glass movement control during power outages
- Audible and Visual Alarm: For error conditions and airflow speed warnings



LN 120 LAMINAR AIR FLOW CABINETS

- Two models with different working table widths: LN 090: 89 cm, LN 120: 119 cm
- Single piece working table made of stainless steel
- Pre-filter with 85 % efficiency for particles $\geq 0,5\ \mu\text{m}$; HEPA filter with 99,995 % efficiency for particles $\geq 0,3\ \mu\text{m}$
- Automatic speed compensation for raising filter resistance
- Perfect air tightness of window seal by means of gas spring assisted window
- DOP test inlet, elapsed time counter and 2 pcs. of power socket as standard
- Optional front enclosure with UV light, support stand, gas and vacuum valve



BENCH TOP STEAM STERILIZERS

Our NC 23B, NC 32S Vacuum Steam Sterilizers have been developed for sterilization of textile, packaged and unpackaged materials, glass materials used in operating rooms, medical, dentistry and veterinary faculties of universities, pharmacy, biotechnology and food sectors.

A safe sterilization cycle is provided by pre-vacuum, which ensures that all the air in the chamber is evacuated before sterilization, and the final vacuum, which ensures that the materials come out dry at the end of sterilization, are made with a maintenance-free vacuum pump.

*

***From the life...
"Purity"***

Multi-eyed Hatay Blue Butterflies never hold dirt thanks to their indented surfaces and waxy wings. With this feature, they spray the water drop 40% faster than the lotus leaf.

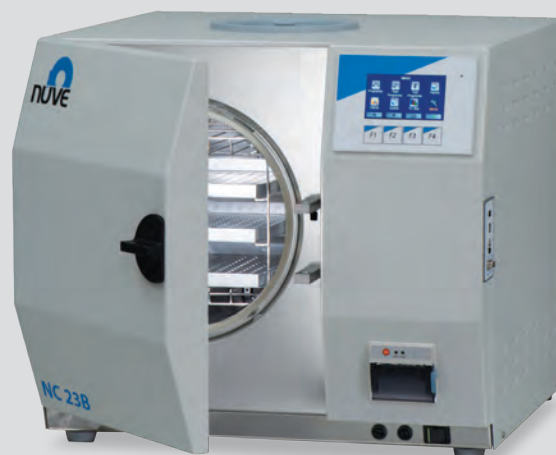


NC 23B / NC 32S BENCH TOP STEAM STERILIZERS

- N-Smart™ microprocessor control system with 4.3" colorful LCD display
- Graphical display of pressure and temperature data
- Built-in steam generator providing rapid steam production
- Repeated pre-vacuum system with maintenance-free diaphragm type vacuum pump
- Repeated post vacuum system for efficient drying
- Internal memory that stores the last 500 cycles in detail and 29,500 cycles in summary
- Process evaluation system that controls the operation of the main control system
- USB port for data transfer
- Wi-Fi connection for N-Mobile™ application for traceability and instant notifications
- Monitoring of the program running with optional NüveCloser™ software, door position, error history and access to memory
- Password protected control system, service, and calibration menu
- Electromechanical cover safety system
- Color changing screen and audible alarm system in case of error
- Reminder for gasket and filter replacement
- Possibility to send e-mail in case of failure
- Safety valve against overpressure
- HEPA filter at air intake line.
- Chamber manufactured according to 2104 / 68 / EU
- Compliant with EN 13060 standard
- Optional panel type printer
- Optional AlerText™ GSM alarm module


NC 23B

- Chamber Capacity: 23 lt
- Stainless steel chamber
- 5 Pre-set programs: universal, quick, gentle, prion, flash
- 2 special programs and 1 drying program
- Bowie & Dick / Helix test and vacuum test programs



NC 32S

- Chamber Volume: 30 lt
- Stainless steel chamber
- 5 Pre-set programs: universal, wrapped quick, gentle, prion.
- 2 special programs and 1 drying program
- Bowie & Dick test and vacuum test programs



VERTICAL LABORATORY STEAM STERILIZERS

NC 40M and NC 90M model Steam Sterilizers have been developed specially to use in liquid and culture studies. By the mean of the flexible temperature probe that can be placed in a liquid container to ensure that the required sterilization time only starts when the fluids themselves are at the temperature stated in the protocol. In this way, the sterilization of the liquids in the container is guaranteed.

It has a programmable microprocessor N-Smart™ control system and a 4.3" LCD screen that facilitates operations. The sterilization cycles made can be transferred to the external memory via the USB output. With the Wi-Fi connection and N-Mobile™ Phone application offered as standard, the temperature value is monitored over the smartphone, and instant notification is received in any error situation. The device is equipped with an alarm system that is activated in an emergency.

The standard fan system in the devices provides rapid cooling of liquids. At the same time, the liquid cultures inside the chamber are cooled at the same rate, the samples are sterilized without overflowing, and the sterilization time is shortened.

NC 40M / 90M VERTICAL LABORATORY STEAM STERILIZERS

- Five pre-set programs which guarantee safe sterilization of the treated material
- Two free programs for liquid and solid also a special program for melting
- Fractionated exhaust system for sensitive materials
- Manometer for chamber pressure
- Validation port
- Display of temperature data graphically
- Programmable delayed start function with real time and date
- Internal memory which stores the records of last 500 cycles in detail and 29.500 cycles as summary
- Monitoring of the program running with optional NüveCloser™ software, door position, error history and access to memory
- Password protected control system, service and calibration menu
- Colour changing display in case of error and audible alarm system
- Reminder for gasket and filter replacement
- Sending e-mail in case of failure with Ethernet connection
- Safety valve against overpressure
- Chamber manufactured according to 2104 / 68 / EU
- Optional panel type printer
- Sending SMS to 5 different mobile numbers in case of malfunction with the optional AlerText™ GSM alarm module

NC 40M / 90M

- Two different chamber volume: 42 litres and 96 litres
- Sterilization temperature range: 105°C to 135°C
- Chamber made of 316L stainless steel
- Maximum bottle capacity:
NC 40M: 10 pieces 1000 ml bottle
NC 90M: 24 pieces 1000 ml bottle



VERTICAL AND HORIZONTAL STEAM STERILIZERS

Our NC 100 and NC 150 Vacuum Steam Sterilizers have been developed for the sterilization of textiles, packaged and unpackaged materials, glass materials used in operating rooms, medical, dentistry and veterinary faculties of universities, pharmacy, biotechnology and food industries. NC 150D, which is a double door model, is suitable for medium-sized sterilization centers with dirty-clean area separation.

A safe sterilization cycle is provided by pre-vacuum, which ensures that all the air in the chamber is evacuated before sterilization, and the final vacuum, which ensures that the materials come out dry at the end of sterilization, are made with a maintenance-free vacuum pump.

NC 100 VERTICAL & NC 150/150D HORIZONTAL STEAM STERILIZERS

- N-Smart™ microprocessor control system with 4.3" colorful LCD display
- Graphical display of pressure and temperature data
- Built-in steam generator providing rapid steam production
- Repeated pre-vacuum system with maintenance-free diaphragm type vacuum pump
- Repeated post-vacuum system for efficient drying
- Internal memory that stores the last 500 cycles in detail and 29,500 cycles in summary
- Process evaluation system that controls the operation of the main control system
- USB port for data transfer
- Wi-Fi connection for N-Mobile™ application for traceability and instant notifications
- Monitoring of the program running with optional NüveCloser™ software, door position, error history and access to memory
- Password protected control system
- Password protected control system, service and calibration menu
- Electromechanical cover safety system
- Color changing screen and audible alarm system in case of error
- Reminder for gasket and filter replacement
- Possibility to send e-mail in case of failure
- Safety valve against overpressure
- HEPA filter at air intake line.
- Chamber manufactured according to 2014 / 68 / EU
- Compliant with EN 285 Standard
- Optional AlerText™ GSM alarm module



NC 100

- Chamber volume: 104 litres
- Sterilization temperature range: 105°C to 136°C.
- Stainless steel chamber
- Pre-heating system that prevents condensation in the chamber and ensures rapid heating of the samples
- 5 pre-set programs: Universal, Textile, Prion, Quick unwrapped, Sensitive material
- 10 free programs and 2 special programs for liquid sterilization and drying
- Vacuum leakage and Bowie & Dick test programs
- Optional automatic water supply unit
- Optional panel type printer



NC 150 / 150D

- Chamber Volume:
NC 150: 162 litres / NC 150D: 150 litres
- Sterilization Temperatures:
121°C / 125°C / 134°C / 136°C
- Stainless steel chamber
- Air driven gasket by internal compressor
- Standard rack carriers and shelves
- 7 preset programs: Resistant textile, wrapped
- porous material, prion, quick unwrapped, resistant rubber, sensitive material, gravity
- 10 special programs, 2 separate programs for liquid sterilization and drying
- Bowie & Dick and vacuum leakage test programs
- Standard panel type printer
- Optional reverse-osmosis system





SINGLE AND DOUBLE DOOR STEAM STERILIZERS

Our large Steam Sterilizers have been developed for the sterilization of textile, packaged and unpackaged materials, glass materials used in operating rooms, medical, dentistry and veterinary faculties of universities, pharmacy, biotechnology and food sectors.

In this type of sterilizers, which are in continuous and intensive use, energy and water savings naturally gain importance. A special vacuum pump with low energy and water consumption and an air-cooled system that eliminates the use of water for cooling process serve this purpose. The devices are manufactured to meet the criteria set by more than one European standard.

Double-door models are especially suitable for central sterilization systems with clean and sterile areas. All operating parameters, possible system malfunctions and error warning system can be easily monitored thanks to the large main touch screen and the second screen in the double-door models.

The stages of the sterilization cycle can be printed out from the printer on the device at the end of the sterilization process. With the optional NuveCloser™ control software, it is possible to monitor the sterilization cycles over the computer. In addition, sterilization cycles can be transferred to external memory via USB output.

NC 300 / 430 / 570 / 710 SINGLE DOOR & NC 430D / 570D / 710D DOUBLE DOOR STEAM STERILIZERS

- N-Wise™ microprocessor control system with 800x480 pixel 7" color touch screen
- 4.3" LCD display on the clean side for double door models NC 430D, NC 570D, NC 710D
- Advanced technology meeting the requirements of the European standard EN 285 for Large Steam Sterilizers
- Pneumatically controlled door with necessary safety features
- High-capacity, quiet-running water ring vacuum pump
- High quality valves, sensors and transmitters for smooth and safe operation
- Pneumatic valves in steam lines
- Low water and energy consumption with the innovative Air Cooling system
- Memory for the last 1000 cycles
- Password protected menu
- Process evaluation system that controls the operation of the main control system
- Comprehensive error identification system
- Service menu that facilitates troubleshooting
- Panel type thermal printer offered as standard
- Standard NuveCom™ communication unit
- Possibility to send e-mails to five different addresses in case of failure
- USB port for data transfer
- Data tracking from N-Mobile™ phone application with standard Wi-Fi connection
- RS 485 output for computer connection
- Optional AlerText™ GSM alarm module
- Optional loading cart

NC 300 / 430 / 430D / 570 / 570D 710 / 710D

- Chamber and STU capacities:
NC 300: 299 liters, 4 pcs. STU
NC 430 / 430D: 428 / 440 liters, 6 pcs. STU
NC 570 / 570D: 567 / 580 liters, 8 pcs. STU
NC 710 / 710D: 707 / 719 liters, 10 pcs. STU
- Sterilization temperatures:
121°C / 125°C / 134°C / 136°C
- Stainless steel chamber
- Pre-heating system that prevents condensation inside the chamber and ensures rapid heating of the samples
- N-Wise™ microprocessor control system with 800x480 pixel 7" color touch screen
- 4.3" LCD display on the clean side for double door models NC 430D, NC 570D, NC 710D
- There are 7 pre-set, 1 liquid, 1 drying and 50 special programs on the devices
- Bowie & Dick and vacuum leakage test programs



TEST CABINETS

TK Series Test Cabinets provide an economical solution to simulate real environmental conditions by controlling temperature, humidity and day & night cycles. Robust, stainless steel construction, high density injected polyurethane insulation and an inner glass observation door make a durable and practical instrument, enhanced by a cable port for internal equipment.

PID temperature control ensures fast recovery, and a comprehensive control system enable the TK models to provide reliable performance. Optional NüveGrowth™ software and data interface permit remote control and monitoring on computer; ideal when proof of operational conditions is required. Remote alarm NüveWarn™ system and instant text messaging with AlerText™ provide the opportunity for immediate response.

Excellent design for different purposes in different industries such as electrics and electronics, automobile and automobile components, chemicals, plastics, textiles, pharmaceuticals, food, packaging, plant growth, seed germination, incubation and rearing of insects.

*

From the life... "Transformation"

Chameleons can change their colors according to their environment, the conditions of light and temperature, or during mating times for courtship.



TK 120 / 252 / 600 TEST CABINETS

- Powerful illumination by means of the lights located inside the door.
- Max lighting level:
TK 120 : 6.000 lux,
TK 252 : 12.000 lux,
TK 600: 12.000 lux
- Programmable lighting timer: 0 - 24 hours.
- Programmable alarm range:
2 to 10°C / 5 to 20 % Rh.
- Humidity range: %5 to %20
- Easy to use programmable microprocessor control system.
- Control panel with 128x64 pixel LCD display
- Electrostatic powder coated stainless steel body
- Humidity generator
- Automatic defrost system
- Very good temperature, humidity distribution and stability with powerful air circulation
- Adjustable safety thermostat for heating.
- Optional automatic water supply unit
- Optional NuveGrowth™ software for programming and controlling via PC.
- Optional Remote alarm outlet
- Optional NuveWarn™ remote alarm system

TK 120 / 252 / 600

- Three different volumes: 123, 253, 567 lt
- Temperature control range:
-10°C to +60°C (Lights off)
- Temperature control range:
0°C to +60°C (Lights on)
- Stainless steel chamber
- Humidity range: 20 % - 95 % Rh
(between +10°C / +60°C).
- 10 program memories
- Program repetition: 1 to 99
- 9 program steps for temperature and humidity.





CLIMATIC TEST CABINET

ID 301 Climatic Test Cabinet, is the ideal design for the tests at different climatic conditions for stability, artificial aging and storage tests in industries such as electronic, automobile, automobile components, aircraft and aviation, chemical, plastic, textile, pharmaceutical, construction material, food, packaging and military equipment.

N-Wise™ control system for continuous optimization of climatic conditions and full information with 7" colourful touch screen mounted on the door offer ergonomic operations. Heating and cooling ramps can be programmed as °C/minute or time period

Perfect sample observation is guaranteed through the quintuple glass window with heating against condensation. Providing the ultimate in insulation, injected foam and aluminium panels are combined with glass wool; the door is fitted with double seals.

ID 301

CLIMATIC TEST CABINET

- Interior lighting to easily follow the samples
- Ø80 mm. access port as standard
- Accurate humidity measurement even at high temperatures by sensitive humidity sensor
- PID controlled heating and proportional controlled cooling and humidification.
- Powerful air circulation system maintaining temperature and humidity uniformity and stability even at low temperature
- Comprehensive self-diagnostic system to provide the information regarding any malfunction
- Massive data storage with 2 GB internal memory
- Adjustable electronic safety thermostat
- RS 232 port for computer, Ethernet port for internet connection and USB port for external memory
- External temperature probe connections for four pieces PT 100 temperature probes
- Operating parameters can be tracked graphically against time
- Data tracking and storage on PC via N-Wise Closer™ software
- USB port to record the data in the memory to a memory stick with selectable time intervals between 1 and 60 minutes
- Sending e-mails up to five e-mail addresses with the details of failure.
- Optional AlerText™ for the ultimate security will send a text to 5 different cell (mobile) phones
- Optional Portable PT 100 temperature sensor
- Optional Automatic water supply unit

ID 301

- Volume: 290 litres
- Temperature control range: - 40°C / +150°C
- Programmable humidity range: 15% - 98% RH (Between 10°C / 90°C)
- Stainless steel chamber resisting sudden temperature changes
- 20 program memories for frequently operated applications
- Programmable 20 steps for each program.
- Program repetition: 1 to 99



GC 401 GROWTH CHAMBER

- Advanced technology for tests at different climatic and lighting conditions such as plant growth, seed germination, acclimation of plants, culture of plant cells and tissues, genetic manipulations of plants, cultivation of protoplasm and cells, incubation and rearing of insects
- Chamber made of stainless steel and glass window in the two sides
- Double layer LOW-E type glass for perfect light transmittance and insulation
- High density injected polyurethane insulation for back and top sides of the chamber
- Powerful lighting from three sides: Left, right and front
- Ideal light density by the mixture of daylight and GroLux fluorescents
- Programmable lighting as real time or time period of program step
- Independent programming of lighting for each side with rate control
- Optional LED lighting by the over shelf
- Humidity produced by the reliable humidity generator
- Accurate humidity measurement even at high temperatures by sensitive humidity sensor
- PID controlled heating and proportional controlled cooling and drying
- Powerful air circulation system maintaining temperature and humidity uniformity and stability even at low temperatures
- N-Wise™ control system for continuous optimization of climatic conditions
- Full information with 7" colourful touch screen mounted on the door
- Twenty program memories for frequently operated applications
- Programmable 20 steps for each program
- Program repetition up to 999 times
- Massive data storage with 2 GB internal memory
- Operating parameters can be tracked graphically against time
- Data tracking and storage on PC via N-Wise Closer™ software
- Equipped with Wi-Fi connection for N-Mobile™
- USB port to record the data in the memory to an external memory with selectable time intervals between 1 and 60 minutes
- Ethernet port for remote access through internet by means of optional N-Wise Closer™ software
- Sending e-mails up to five e-mail addresses with the details of failure
- Audible alarms and on-screen messages in plain language, no codes
- For ultimate security optional AlerText™ sends a text message to mobile phones

GC 401

- Chamber volume: 316 liters
- Wide range of temperature control: -10°C / +60°C (lights off), 0°C/+60°C (lights on)
- Programmable humidity range: 20 % / 90 % Rh (between +10°C and +60°C)





NÜVE SANAYİ MALZEMELERİ İMALAT VE TİCARET A.Ş.
Saracalar Mah. Saracalar Kümeevleri No:4/2 Akyurt 06750
ANKARA / TÜRKİYE
t. +90 312 399 28 30 f. +90 312 399 21 97

nuve.com.tr sales@nuve.com.tr