



MADE IN TURKEY

KESIN MEDICAL

- CENTRAL STERILIZATION UNITS
- STERILIZATION BASKETS
- STEAM STERILIZATION
- LOADING TROLLEYS
- CARRYING TROLLEYS

EXACT SOLUTION TO STERILIZATION

COMPANY

KESIN MEDICAL;

HAS BEEN FOUNDED IN 2001 WITH THE AIM OF PRODUCING STEAM STERILIZERS (AUTOCLAVE) WHICH POSSESS THE FUNCTION OF STERILIZATION BY USING 97% SATURATED VAPOR PRESSURE, OF TEXTILE MATERIALS IN THE DURABLE PACKAGE, ALL KINDS OF SURGICAL AND DRESSING TOOLS, RUBBER-GLASS MATERIALS, LIQUIDS IN GLASS, USED IN THE OPERATING ROOMS AND IN THE LABORATORIES OF STATE AND PRIVATE HOSPITALS. ALSO WE PROVIDE TECHNICAL SERVICE, MAINTENANCE AND REPAIR.

OUR DEVICES ARE CERTIFIED WITH TS EN ISO 9001:2008- ISO 14001: 2004- EN ISO 13485:2012- ISO 13485:2003, TS EN 285+ A2, 97/23/EC (PRESSURE EQUIPMENT DIRECTIVE) – 93/42/EEC (MEDICAL DEVICE DIRECTIVE).

SINCE THE ESTABLISHMENT OUR COMPANY HAS BEEN CONTINUING PRODUCTION WITH ITS EXPERIENCED STAFF, SUPERIOR QUALITY, LESS-FAULT, CUSTOMER SATISFACTION, 7/24 TECHNICAL SERVICE, IN THE DIRECTION OF DEVELOPING TECHNOLOGIES AND ORGANIZATIONS' SUPPLIES AND DEMANDS BY ADOPTING THE PRINCIPLE OF “**EXACT SOLUTION TO STERILIZATION**”.

OUR VISION IS TO MAKE KESIN MEDIKAL BRAND IMPROVED AS A PRESTIGIOUS AND CONFIDENTIAL COMPANY IN THE INTERNATIONAL HEALTH AND MEDICAL SECTOR

POLICY OF QUALITY

- COMPLIANCE WITH SPECIFICATION
- SUPERIOR QUALITY AND ELIGIBLE COSTS
- FOLLOW-UP AND IMPLEMENTATION OF TECHNOLOGY
- RAPID FULFILLMENT OF CUSTOMER EXPECTATIONS
- CONTINUOUS INNOVATION
- TRYING TO DO BETTER WHEN COMPARED TO WHAT HAVE BEEN DONE BEFORE
- ENSURING CONTINUOUS DISCIPLINE
- PRESERVING AND PROTECTING THE RIGHTS OF OUR EMPLOYEES
- PROVIDING THE BEST TRAINING

CERTIFICATES

CONSTITUTIONAL CERTIFICATES

T.R. PATENT INSTITUTE TRADEMARK RENEWAL CERTIFICATE

ANKARA CHAMBER OF COMMERCE CAPASITY REPORT

TSI (TURKISH STANDART INSTITUTIONS) SERVICE ADEQUACY CERTIFICATE

T.R. MINISTRY OF SCIENCE, INDUSTRY AND TECHNOLOGY (INDISTRIAL REGISTRY CERTIFICATE)

T.R. MINISTRY OF INDUSTRY AND COMMERCE (AFTER SALE SERVICA ADEQUACY CERTIFICATE)

T.R. MINISTRY OF INDUSTRY AND COMMERCE (CERTIFICATE OF WARRANTY)

CERTIFICATE OF REGISTRATION-SUBSCRIPTION OF T.R. MINISTRY OF CULTURE AND TOURISM'S DATABASES

DEVICE CERTIFICATES

- REPUBLIC OF TURKEY MEDICAL DEVICES AND DRUGS DATABANK
- TS EN ISO 9001:2008
- TSE EN 285+A2
- EN ISO 13485:2012- ISO 13485:2003
- 93/42/EEC MEDICAL DEVICE DIRECTIVE
- 97/23/EC PRESSURE EQUIPMENT DIRECTIVE
- HYGEN GROUP EN 285 (2009) TIP TEST
- TSE EN 60601-1-2 EMC TEST
- WATER SAVING CERTIFICATE
- EN 60601-1-2
- EN 1010-1
- EN 61010-2-040
- EN 61326-1997
- EN 60204-1
- TSE EN ISO 17665-1
- ISO 14001:2004 (ENVIRONMENTAL MANAGEMENT PROCESS)

IMPORTANCE OF STERILIZATION

STERILIZATION IS THE PROCESS OF REMOVING ALL TRACES OF BACTERIA AND OTHER GERMS. IT IS AN IMPORTANT PROCESS, WHICH HELPS TO REDUCE THE RISK OF INFECTION AND PREVENT THE SPREAD OF INFECTIONS AND ILLNESSES. STERILISATION IS USED IN A VARIETY OF DIFFERENT CLINICAL SETTINGS, INCLUDING HOSPITALS, DENTAL SURGERIES AND COMMUNITY HEALTH CENTRES, AS WELL AS AT HOME AND IN OUTLETS OR PLACES PROVIDING FOOD.

STERILISATION IN THE MEDICAL INDUSTRY;

STERILISATION IS VERY IMPORTANT IN THE MEDICAL INDUSTRY. WITHOUT STERILISATION, INFECTIONS WOULD FLY AROUND AND THOUSANDS OF LIVES WOULD BE LOST. STERILISATION HELPS TO PREVENT THE DEVELOPMENT AND SPREAD OF INFECTION, AS WELL AS PROTECTING MEMBERS OF STAFF WORKING IN CLINICAL SETTINGS AND MEMBERS OF THE PUBLIC.

ALSO STERILIZING MEDICAL EQUIPMENT IS OF THE UTMOST IMPORTANCE IN THE MEDICAL FIELD. THOUSANDS OF PATIENTS DIE EVERY YEAR OR ARE INFECTED WITH DISEASE BECAUSE MEDICAL EQUIPMENT WAS NOT PROPERLY STERILIZED. COMPLICATIONS SURFACE IN MANY SURGERIES DUE TO IMPROPER STERILIZATION. DETAILED BELOW ARE 3 OF THE BIGGEST REASONS WHY THE STERILIZATION OF MEDICAL EQUIPMENT IS OF THE UTMOST IMPORTANCE.



NON- STERILIZED INSTRUMENTS



STERILIZED INSTRUMENTS

KESIN MEDICAL



SLIDING DOORS



VERTICAL



HINGED DOOR



KM-K

SINGLE SLIDING DOOR



KM-K MEASUREMENTS AND WEIGHT

	LITER	STU	EXTERIOR DIMENSIONS (cm)	INTERIOR DIMENSIONS (cm)	WEIGHT
KM-K	125 L	2	50x50x50	W 102 D 130 H 180	600 kg
KM-K	250 L	2	50x50x100	W 102 D 138 H 118	700 kg
KM-K	422 L	6	65x65x100	W 115 D 166 H 195	930 kg
KM-K	560 L	8	65x65x135	W 115 D 206 H 195	980 kg
KM-K	650 L	10	66x66x150	W 115 D 215 H 195	1030 kg
KM-K	750 L	14	65x65x178	W 115 D 265 H 195	1130 kg
KM-K	850 L	12	65x65x202	W 115 D 234 H 195	1170 kg
KM-K	920 L	14	65x65x218	W 115 D 250 H 195	1240 kg

KM-K GENERAL SPESIFICATIONS

DOOR FEATURES

DOOR TYPE: SINGLE SLIDING DOOR (ENGINE-OPERATED TYPE, PISTON-OPERATED TYPE, MANUEL LIFTING TYPE)

THICKNESS: 6 MM -8 MM - 10 MM

LOCK SYSTEM : INFLATEABLE SEALING RING (WITH AIR OR STEAM) – SAFETY PISTOL – SAFETY LOCK

SEALING: SILICONE SEALING RING RESISTANT TO STERILIZATION TEMPERATURE, ACID AND CHEMICALS

DOORLOCK SYSTEM : MANUEL – AUTOMATIC (ENGINE-OPERATED TYPE, PISTON-OPERATED TYPE, MANUEL LIFTING TYPE

DOORLOCK SAFETY : DOOR SAFETY CONTROL AGAINST OVERHEATING AND OBJECTS

CELL AND JACKET FEATURES

DESIGNED ACCORDING TO EN ISO 13485:2003 STAND AND 93/42/AT (93/42/EEC) MEDICAL DEVICES REGULATIONS

CELL 6 MM AND JACKET 3.5 MM MANUFACTURE WITH AISI 316L-316 TI HIGH QUALITY STAINLESS MATERIAL

RECTANGULAR PRISM SHAPED, CLEANED AGAINST CORROSION

ISOLATED WITH NONCARCINOGEN (CFC) AND HEAT-RESISTANT MATERIAL TO PREVENT HEAT LOSS IN THE CELL AND JACKET AND TO INCREASE THE TEMPERATURE

PRESSURE AND TEMPERATURE SENSOR INPUTS ARE AVAILABLE TO TEST THE CELL AND JACKET MEASUREMENT PROCESS

THE CONTROL OF CELL WELDING PROCESS IS TESTED WITH X-RAY WELDING MACHINE

THE CELL HAS BEEN CERTIFIED BY TURK LOYDU AND TSE BY TESTING.

DISPLAY SEPESICIFATIONS

CE CERTIFICATED

PROGRAMS ARE DESIGNED ACCORDING TO EN 285 STANDARS

DISPLAY TYPE: COLORED TOUCHSCREEN - TOUCHSCREEN WITH BUTTONS

SCREEN SIZE :DESIGNED ACCORDING TO THE DEVICE MODEL (3.5 - 5.7 - 7 - 10 INCHES)

SUPPLY: 24VDC

TFT LCD - CSTNLCD - HMI GRAPHIC - 256 RANK 1024 SCREEN RESOLUTION

USB STICK USE FORPROGRAM LODING ANDFAILURE LOGGIND

BORCODE READER SYSTEM

RS 232 PORT - RS 485 PORT - USB - SD KART - ETHERNET - GPRS MODUL - FAX MODEM CONNECTION PROPERTIES

DISPLAY PRAMETERS

DIGITAL AND GRAPHICS PREVIEW OF INSTANT HEAT AND PRESSURE

FAULT TRACKING AND EASY TO FIND FAUNT PROGRAM

DATE & TIME , SYSTEMATIC SETUP MENU

ANIMATION PREVIEW OF DEVICE OPERATION

UPDATED TIME & DATE

INSTANT TRACKING OF OPERATION STAGES

IN CASE OF FAULT AUDIBLE AND VISUAL WARNING IN THE SCREEN

PRINT FACILITY OF COMPLETED WORKS

SYSTEM TRACKING PROGRAM

WARNING OF PERIODIC MAINTENANCE

SECURITY PASSWORD TO PREVENT UNAUTHORIZED ENTRY

OPERATIN CYCLE TRACKING

REVIEW OF THE PROGRAMS'S NAME AND THE STERILIZATOR VALUES

PERSINAL PROGRAM USE

POSITION OF THE DOORS (OPEN/CLOSED)

SAFETY FEATURES

ON / OFF BUTTON WHICH IS USED FOR THE CONTROL OF ELECTRIC ENERGY

EMEGENCY STOP BUTTON WHICH STOP THE OPERATION AND EVACUATE THE PRESSURE IN CASE OF AN EMERGENCY AND OVERPRESSURE.

IN CASE OF OVERPRESSURE , CELL- JACKET - GENERATOR SAFETY VALVES

IN CASE OF OVERHEATING , CELL - JACKET - GENERATOR PROBE HEAT CONTROLALSO THERMOSTATE CONTROL

INSTANT DISPLAY OF ANY FAILURE DURING OPERATION

INSTANT TRACKING AND REGISTRATION SYSTEM IN ANY FAILURE

DOORLOCK SAFETY SYSTEM OVERCURRENT CONTROL

DISPLAY THE OPERATIONS BEING NEGATIVE IN CASE OF STEM , VACUUM OR AIR LEAK-HEAT LOSS

STOP WARNING IN CASE OF POWER OR WATER CUT DURING OPERATION

THERMIC AND FUSE RELAYS WHICH PROTECT THE SHORT CICUIT AND LEAK OF ELECTRICAL CURRENT

PROGRAMMATIC AND MECHANICAL SYSTEM THAT PREVENT THE DOORS'OPENING WHEN THE PRESSURE IN THE CELL IS OVER 0.50 mBAR

ELECTRICAL PROPERTIES

220/380-400 V 50 HZ

EN 60601-1-2

EN1010-1

EN 61010-2-040

EN 61326-1997

EN 60204-1

MANUFACTURED BASED ON THE STANDARDS ABOVE BY RECEIVING TEST CERTIFICATES

KM-K67

SINGLE SLIDING DOOR



KM-K67 DEVICE MEASUREMENTS AND WEIGHT

	LITER	STU	EXTERIOR DIMENSIONS _(cm)	INTERIOR DIMENSIONS _(cm)	WEIGHT
KM-K67	350 L	4	67x67x78	W 115 D 130 H 195	630 kg
KM-K67	470 L	6	67x67x105	W 115 D 138 H 195	700 kg
KM-K67	600 L	8	67x67x134	W 115 D 166 H 195	1000 kg
KM-K67	700 L	10	67x67x156	W 115 D 206 H 195	1100 kg
KM-K67	800 L	10	67x67x179	W 115 D 215 H 195	1180 kg
KM-K67	965 L	14	67x67x215	W 115 D 265 H 195	1250 kg

KM-K67 GENERAL SPESIFICATIONS

DOOR FEATURES

DOOR TYPE: SINGLE SLIDING DOOR (ENGINE-OPERATED TYPE, PISTON-OPERATED TYPE, MANUEL LIFTING TYPE)

THICKNESS: 6 MM -8 MM - 10 MM

LOCK SYSTEM : INFLATEABLE SEALING RING (WITH AIR OR STEAM) – SAFETY PISTOL – SAFETY LOCK

SEALING: SILICONE SEALING RING RESISTANT TO STERILIZATION TEMPERATURE, ACID AND CHEMICALS

DOORLOCK SYSTEM : MANUEL – AUTOMATIC (ENGINE-OPERATED TYPE, PISTON-OPERATED TYPE, MANUEL LIFTING TYPE)

DOORLOCK SAFETY : DOOR SAFETY CONTROL AGAINST OVERHEATING AND OBJECTS

CELL AND JACKET FEATURES

DESIGNED ACCORDING TO EN ISO 13485:2003 STAND AND 93/42/AT (93/42/EEC) MEDICAL DEVICES REGULATIONS

CELL 6 MM AND JACKET 3.5 MM MANUFACTURE WITH AISI 316L-316 TI HIGH QUALITY STAINLESS MATERIAL

RECTANGULAR PRISM SHAPED, CLEANED AGAINST CORROSION

ISOLATED WITH NONCARCINOGEN (CFC) AND HEAT-RESISTANT MATERIAL TO PREVENT HEAT LOSS IN THE CELL AND JACKET AND TO INCREASE THE TEMPERATURE

PRESSURE AND TEMPERATURE SENSOR INPUTS ARE AVAILABLE TO TEST THE CELL AND JACKET MEASUREMENT PROCESS

THE CONTROL OF CELL WELDING PROCESS IS TESTED WITH X-RAY WELDING MACHINE

THE CELL HAS BEEN CERTIFIED BY TURK LOYDU AND TSE BY TESTING.

DISPLAY SEPESICIFATIONS

CE CERTIFICATED

PROGRAMS ARE DESIGNED ACCORDING TO EN 285 STANDARS

DISPLAY TYPE: COLORED TOUCHSCREEN - TOUCHSCREEN WITH BUTTONS

SCREEN SIZE :DESIGNED ACCORDING TO THE DEVICE MODEL (3.5 - 5.7 - 7 - 10 INCHES)

SUPPLY: 24VDC

TFT LCD - CSTNLCD - HMI GRAPHIC - 256 RANK 1024 SCREEN RESOLUTION

USB STICK USE FORPROGRAM LODING ANDFAILURE LOGGIND

BORCODE READER SYSTEM

RS 232 PORT - RS 485 PORT - USB - SD KART - ETHERNET - GPRS MODUL - FAX MODEM CONNECTION PROPERTIES

DISPLAY PRAMETERS

DIGITAL AND GRAPHICS PREVIEW OF INSTANT HEAT AND PRESSURE

FAULT TRACKING AND EASY TO FIND FAUNT PROGRAM

DATE & TIME , SYSTEMATIC SETUP MENU

ANIMATION PREVIEW OF DEVICE OPERATION

UPDATED TIME & DATE

INSTANT TRACKING OF OPERATION STAGES

IN CASE OF FAULT AUDIBLE AND VISUAL WARNING IN THE SCREEN

PRINT FACILITY OF COMPLETED WORKS

SYSTEM TRACKING PROGRAM

WARNING OF PERIODIC MAINTENANCE

SECURITY PASSWORD TO PREVENT UNAUTHORIZED ENTRY

OPERATIN CYCLE TRACKING

REVIEW OF THE PROGRAMS'S NAME AND THE STERILIZATOR VALUES

PERSINAL PROGRAM USE

POSITION OF THE DOORS (OPEN/CLOSED)

SAFETY FEATURES

ON / OFF BUTTON WHICH IS USED FOR THE CONTROL OF ELECTRIC ENERGY

EMEGENCY STOP BUTTON WHICH STOP THE OPERATION AND EVACUATE THE PRESSURE IN CASE OF AN EMERGENCY AND OVERPRESSURE.

IN CASE OF OVERPRESSURE , CELL- JACKET - GENERATOR SAFETY VALVES

IN CASE OF OVERHEATING , CELL - JACKET - GENERATOR PROBE HEAT CONTROLALSO THERMOSTATE CONTROL

INSTANT DISPLAY OF ANY FAILURE DURING OPERATION

INSTANT TRACKING AND REGISTRATION SYSTEM IN ANY FAILURE

DOORLOCK SAFETY SYSTEM OVERCURRENT CONTROL

DISPLAY THE OPERATIONS BEING NEGATIVE IN CASE OF STEM , VACUUM OR AIR LEAK-HEAT LOSS

STOP WARNING IN CASE OF POWER OR WATER CUT DURING OPERATION

THERMIC AND FUSE RELAYS WHICH PROTECT THE SHORT CICUIT AND LEAK OF ELECTRICAL CURRENT

PROGRAMMATIC AND MECHANICAL SYSTEM THAT PREVENT THE DOORS'OPENING WHEN THE PRESSURE IN THE CELL IS OVER 0.50 mBAR

ELECTRICAL PROPERTIES

220/380-400 V 50 HZ

EN 60601-1-2

EN1010-1

EN 61010-2-040

EN 61326-1997

EN 60204-1

MANUFACTURED BASED ON THE STANDARDS ABOVE BY RECEIVING TEST CERTIFICATES

KM-CK

DOUBLE SLIDING DOOR



KM-CK DEVICE MEASUREMENTS AND WEIGHT

	LITER	STU	EXTERIOR DIMENSIONS _(cm)	INTERIOR DIMENSIONS _(cm)	WEIGHT
KM-CK	250 L	2	50x50x100	W 102 D 132 H 180	800 kg
KM-CK	422 L	6	65x65x100	W 115 D 132 H 195	1000 kg
KM-CK	560 L	8	65x65x135	W 115 D 167 H 195	1050 kg
KM-CK	650 L	10	66x66x150	W 115 D 182 H 195	1100 kg
KM-CK	750 L	14	65x65x178	W 115 D 210 H 195	1180 kg
KM-CK	850 L	12	65x65x202	W 115 D 234 H 195	1250 kg
KM-CK	920L	14	65x65x218	W 115 D 250 H 195	1350 kg

KM-CK GENERAL SPESIFICATIONS

DOOR FEATURES

DOOR TYPE: DOUBLE SLIDING DOOR (ENGINE-OPERATED TYPE, PISTON-OPERATED TYPE, MANUEL LIFTING TYPE)

THICKNESS: 6 MM -8 MM - 10 MM

LOCK SYSTEM : INFLATEABLE SEALING RING (WITH AIR OR STEAM) – SAFETY PISTOL – SAFETY LOCK

SEALING: SILICONE SEALING RING RESISTANT TO STERILIZATION TEMPERATURE, ACID AND CHEMICALS

DOORLOCK SYSTEM : MANUEL – AUTOMATIC (ENGINE-OPERATED TYPE, PISTON-OPERATED TYPE, MANUEL LIFTING TYPE)

DOORLOCK SAFETY : DOOR SAFETY CONTROL AGAINST OVERHEATING AND OBJECTS

CELL AND JACKET FEATURES

DESIGNED ACCORDING TO EN ISO 13485:2003 STAND AND 93/42/AT (93/42/EEC) MEDICAL DEVICES REGULATIONS

CELL 6 MM AND JACKET 3.5 MM MANUFACTURE WITH AISI 316L-316 TI HIGH QUALITY STAINLESS MATERIAL

RECTANGULAR PRISM SHAPED, CLEANED AGAINST CORROSION

ISOLATED WITH NONCARCINOGEN (CFC) AND HEAT-RESISTANT MATERIAL TO PREVENT HEAT LOSS IN THE CELL AND JACKET AND TO INCREASE THE TEMPERATURE

PRESSURE AND TEMPERATURE SENSOR INPUTS ARE AVAILABLE TO TEST THE CELL AND JACKET MEASUREMENT PROCESS

THE CONTROL OF CELL WELDING PROCESS IS TESTED WITH X-RAY WELDING MACHINE

THE CELL HAS BEEN CERTIFIED BY TURK LOYDU AND TSE BY TESTING.

DISPLAY SEPESICIFATIONS

CE CERTIFICATED

PROGRAMS ARE DESIGNED ACCORDING TO EN 285 STANDARS

DISPLAY TYPE: COLORED TOUCHSCREEN - TOUCHSCREEN WITH BUTTONS

SCREEN SIZE :DESIGNED ACCORDING TO THE DEVICE MODEL (3.5 - 5.7 - 7 - 10 INCHES)

SUPPLY: 24VDC

TFT LCD - CSTNLCD - HMI GRAPHIC - 256 RANK 1024 SCREEN RESOLUTION

USB STICK USE FORPROGRAM LODING ANDFAILURE LOGGIND

BORCODE READER SYSTEM

RS 232 PORT - RS 485 PORT - USB - SD KART - ETHERNET - GPRS MODUL - FAX MODEM CONNECTION PROPERTIES

DISPLAY PRAMETERS

DIGITAL AND GRAPHICS PREVIEW OF INSTANT HEAT AND PRESSURE

FAULT TRACKING AND EASY TO FIND FAUNT PROGRAM

DATE & TIME , SYSTEMATIC SETUP MENU

ANIMATION PREVIEW OF DEVICE OPERATION

UPDATED TIME & DATE

INSTANT TRACKING OF OPERATION STAGES

IN CASE OF FAULT AUDIBLE AND VISUAL WARNING IN THE SCREEN

PRINT FACILITY OF COMPLETED WORKS

SYSTEM TRACKING PROGRAM

WARNING OF PERIODIC MAINTENANCE

SECURITY PASSWORD TO PREVENT UNAUTHORIZED ENTRY

OPERATIN CYCLE TRACKING

REVIEW OF THE PROGRAMS'S NAME AND THE STERILIZATOR VALUES

PERSINAL PROGRAM USE

POSITION OF THE DOORS (OPEN/CLOSED)

SAFETY FEATURES

ON / OFF BUTTON WHICH IS USED FOR THE CONTROL OF ELECTRIC ENERGY

EMEGENCY STOP BUTTON WHICH STOP THE OPERATION AND EVACUATE THE PRESSURE IN CASE OF AN EMERGENCY AND OVERPRESSURE.

IN CASE OF OVERPRESSURE , CELL- JACKET - GENERATOR SAFETY VALVES

IN CASE OF OVERHEATING , CELL - JACKET - GENERATOR PROBE HEAT CONTROLALSO THERMOSTATE CONTROL

INSTANT DISPLAY OF ANY FAILURE DURING OPERATION

INSTANT TRACKING AND REGISTRATION SYSTEM IN ANY FAILURE

DOORLOCK SAFETY SYSTEM OVERCURRENT CONTROL

DISPLAY THE OPERATIONS BEING NEGATIVE IN CASE OF STEM , VACUUM OR AIR LEAK-HEAT LOSS

STOP WARNING IN CASE OF POWER OR WATER CUT DURING OPERATION

THERMIC AND FUSE RELAYS WHICH PROTECT THE SHORT CICUIT AND LEAK OF ELECTRICAL CURRENT

PROGRAMMATIC AND MECHANICAL SYSTEM THAT PREVENT THE DOORS'OPENING WHEN THE PRESSURE IN THE CELL IS OVER 0.50 mBAR

ELECTRICAL PROPERTIES

220/380-400 V 50 HZ

EN 60601-1-2

EN1010-1

EN 61010-2-040

EN 61326-1997

EN 60204-1

MANUFACTURED BASED ON THE STANDARDS ABOVE BY RECEIVING TEST CERTIFICATES

KM-CK67

DOUBLE SLIDING DOOR



KM-CK67 DEVICE MEASUREMENTS AND WEIGHT

	LITER	STU	EXTERIOR DIMENSIONS _(cm)	INTERIOR DIMENSIONS _(cm)	WEIGHT
KM-CK67	350 L	4	67x67x78	W 115 D 110 H 195	680 kg
KM-CK67	470 L	6	67x67x105	W 115 D 137 H 195	830 kg
KM-CK67	600 L	8	67x67x134	W 115 D 166 H 195	1100 kg
KM-CK67	700 L	10	67x67x156	W 115 D 188 H 195	1180 kg
KM-CK67	800 L	10	67x67x179	W 115 D 211 H 195	1220 kg
KM-CK67	965 L	14	67x67x215	W 115 D 247 H 195	1310 kg

KM-CK67 GENERAL SPESIFICATIONS

DOOR FEATURES

DOOR TYPE: DOUBLE SLIDING DOOR (ENGINE-OPERATED TYPE, PISTON-OPERATED TYPE, MANUEL LIFTING TYPE)

THICKNESS: 6 MM -8 MM - 10 MM

LOCK SYSTEM : INFLATEABLE SEALING RING (WITH AIR OR STEAM) – SAFETY PISTOL – SAFETY LOCK

SEALING: SILICONE SEALING RING RESISTANT TO STERILIZATION TEMPERATURE, ACID AND CHEMICALS

DOORLOCK SYSTEM : MANUEL – AUTOMATIC (ENGINE-OPERATED TYPE, PISTON-OPERATED TYPE, MANUEL LIFTING TYPE

DOORLOCK SAFETY : DOOR SAFETY CONTROL AGAINST OVERHEATING AND OBJECTS

CELL AND JACKET FEATURES

DESIGNED ACCORDING TO EN ISO 13485:2003 STAND AND 93/42/AT (93/42/EEC) MEDICAL DEVICES REGULATIONS

CELL 6 MM AND JACKET 3.5 MM MANUFACTURE WITH AISI 316L-316 TI HIGH QUALITY STAINLESS MATERIAL

RECTANGULAR PRISM SHAPED, CLEANED AGAINST CORROSION

ISOLATED WITH NONCARCINOGEN (CFC) AND HEAT-RESISTANT MATERIAL TO PREVENT HEAT LOSS IN THE CELL AND JACKET AND TO INCREASE THE TEMPERATURE

PRESSURE AND TEMPERATURE SENSOR INPUTS ARE AVAILABLE TO TEST THE CELL AND JACKET MEASUREMENT PROCESS

THE CONTROL OF CELL WELDING PROCESS IS TESTED WITH X-RAY WELDING MACHINE

THE CELL HAS BEEN CERTIFIED BY TURK LOYDU AND TSE BY TESTING.

DISPLAY SEPESICIFATIONS

CE CERTIFICATED

PROGRAMS ARE DESIGNED ACCORDING TO EN 285 STANDARS

DISPLAY TYPE: COLORED TOUCHSCREEN - TOUCHSCREEN WITH BUTTONS

SCREEN SIZE :DESIGNED ACCORDING TO THE DEVICE MODEL (3.5 - 5.7 - 7 - 10 INCHES)

SUPPLY: 24VDC

TFT LCD - CSTNLCD - HMI GRAPHIC - 256 RANK 1024 SCREEN RESOLUTION

USB STICK USE FORPROGRAM LODING ANDFAILURE LOGGIND

BORCODE READER SYSTEM

RS 232 PORT - RS 485 PORT - USB - SD KART - ETHERNET - GPRS MODUL - FAX MODEM CONNECTION PROPERTIES

DISPLAY PRAMETERS

DIGITAL AND GRAPHICS PREVIEW OF INSTANT HEAT AND PRESSURE

FAULT TRACKING AND EASY TO FIND FAUNT PROGRAM

DATE & TIME , SYSTEMATIC SETUP MENU

ANIMATION PREVIEW OF DEVICE OPERATION

UPDATED TIME & DATE

INSTANT TRACKING OF OPERATION STAGES

IN CASE OF FAULT AUDIBLE AND VISUAL WARNING IN THE SCREEN

PRINT FACILITY OF COMPLETED WORKS

SYSTEM TRACKING PROGRAM

WARNING OF PERIODIC MAINTENANCE

SECURITY PASSWORD TO PREVENT UNAUTHORIZED ENTRY

OPERATIN CYCLE TRACKING

REVIEW OF THE PROGRAMS'S NAME AND THE STERILIZATOR VALUES

PERSINAL PROGRAM USE

POSITION OF THE DOORS (OPEN/CLOSED)

SAFETY FEATURES

ON / OFF BUTTON WHICH IS USED FOR THE CONTROL OF ELECTRIC ENERGY

EMEGENCY STOP BUTTON WHICH STOP THE OPERATION AND EVACUATE THE PRESSURE IN CASE OF AN EMERGENCY AND OVERPRESSURE.

IN CASE OF OVERPRESSURE , CELL- JACKET - GENERATOR SAFETY VALVES

IN CASE OF OVERHEATING , CELL - JACKET - GENERATOR PROBE HEAT CONTROLALSO THERMOSTATE CONTROL

INSTANT DISPLAY OF ANY FAILURE DURING OPERATION

INSTANT TRACKING AND REGISTRATION SYSTEM IN ANY FAILURE

DOORLOCK SAFETY SYSTEM OVERCURRENT CONTROL

DISPLAY THE OPERATIONS BEING NEGATIVE IN CASE OF STEM , VACUUM OR AIR LEAK-HEAT LOSS

STOP WARNING IN CASE OF POWER OR WATER CUT DURING OPERATION

THERMIC AND FUSE RELAYS WHICH PROTECT THE SHORT CICUIT AND LEAK OF ELECTRICAL CURRENT

PROGRAMMATIC AND MECHANICAL SYSTEM THAT PREVENT THE DOORS'OPENING WHEN THE PRESSURE IN THE CELL IS OVER 0.50 mBAR

ELECTRICAL PROPERTIES

220/380-400 V 50 HZ

EN 60601-1-2

EN1010-1

EN 61010-2-040

EN 61326-1997

EN 60204-1

MANUFACTURED BASED ON THE STANDARDS ABOVE BY RECEIVING TEST CERTIFICATES

KM-V

SINGLE HINGED DOOR



KM-V DEVICE MEASUREMENTS AND WEIGHT

	LITER	STU	EXTERIOR DIMENSIONS _(cm)	INTERIOR DIMENSIONS _(cm)	WEIGHT
KM-V	125 L	2	50x50x50	W 80 D 130 H 175	600 kg
KM-V	250 L	2	50x50x100	W 80 D 138 H 175	700 kg
KM-V	422 L	6	65x65x100	W 98 D 166 H 185	980 kg
KM-V	560 L	8	65x65x135	W 98 D 206 H 185	1050 kg
KM-V	650 L	10	66x66x150	W 98 D 215 H 185	1090 kg
KM-V	750 L	14	65x65x178	W 98 D 265 H 185	1150 kg
KM-V	850 L	12	65x65x202	W 98 D 234 H 185	1250 kg
KM-V	920 L	14	65x65x218	W 98 D 250 H 185	1380 kg

KM-V GENERAL SPESIFICATIONS

DOOR FEATURES

DOOR TYPE: SINGLE HINGED DOOR

THICKNESS: 16 MM - 18 MM - 20 MM

LOCK SYSTEM : MECHANICAL LOCK SYSTEM

SEALING: SILICONE SEALING RING RESISTANT TO STERILIZATION TEMPERATURE, ACID AND CHEMICALS

DOORLOCK SYSTEM : MANUEL

DOORLOCK SAFETY : DOOR SAFETY CONTROL AGAINST OVERHEATING AND OBJECTS

CELL AND JACKET FEATURES

DESIGNED ACCORDING TO EN ISO 13485:2003 STAND AND 93/42/AT (93/42/EEC) MEDICAL DEVICES REGULATIONS

CELL 6 MM AND JACKET 3.5 MM MANUFACTURE WITH AISI 316L-316 TI HIGH QUALITY STAINLESS MATERIAL

RECTANGULAR PRISM SHAPED, CLEANED AGAINST CORROSION

ISOLATED WITH NONCARCINOGEN (CFC) AND HEAT-RESISTANT MATERIAL TO PREVENT HEAT LOSS IN THE CELL AND JACKET AND TO INCREASE THE TEMPERATURE

PRESSURE AND TEMPERATURE SENSOR INPUTS ARE AVAILABLE TO TEST THE CELL AND JACKET MEASUREMENT PROCESS

THE CONTROL OF CELL WELDING PROCESS IS TESTED WITH X-RAY WELDING MACHINE

THE CELL HAS BEEN CERTIFIED BY TURK LOYDU AND TSE BY TESTING.

DISPLAY SEPESICIFATIONS

CE CERTIFICATED

PROGRAMS ARE DESIGNED ACCORDING TO EN 285 STANDARS

DISPLAY TYPE: COLORED TOUCHSCREEN - TOUCHSCREEN WITH BUTTONS

SCREEN SIZE : DESIGNED ACCORDING TO THE DEVICE MODEL (3.5 - 5.7 - 7 - 10 INCHES)

SUPPLY: 24VDC

TFT LCD - CSTNLCD - HMI GRAPHIC - 256 RANK 1024 SCREEN RESOLUTION

USB STICK USE FORPROGRAM LODING ANDFAILURE LOGGIND

BORCODE READER SYSTEM

RS 232 PORT - RS 485 PORT - USB - SD KART - ETHERNET - GPRS MODUL - FAX MODEM CONNECTION PROPERTIES

DISPLAY PRAMETERS

DIGITAL AND GRAPHICS PREVIEW OF INSTANT HEAT AND PRESSURE

FAULT TRACKING AND EASY TO FIND FAUNT PROGRAM

DATE & TIME , SYSTEMATIC SETUP MENU

ANIMATION PREVIEW OF DEVICE OPERATION

UPDATED TIME & DATE

INSTANT TRACKING OF OPERATION STAGES

IN CASE OF FAULT AUDIBLE AND VISUAL WARNING IN THE SCREEN

PRINT FACILITY OF COMPLETED WORKS

SYSTEM TRACKING PROGRAM

WARNING OF PERIODIC MAINTENANCE

SECURITY PASSWORD TO PREVENT UNAUTHORIZED ENTRY

OPERATIN CYCLE TRACKING

REVIEW OF THE PROGRAMS'S NAME AND THE STERILIZATOR VALUES

PERSINAL PROGRAM USE

POSITION OF THE DOORS (OPEN/CLOSED)

SAFETY FEATURES

ON / OFF BUTTON WHICH IS USED FOR THE CONTROL OF ELECTRIC ENERGY

EMEGENCY STOP BUTTON WHICH STOP THE OPERATION AND EVACUATE THE PRESSURE IN CASE OF AN EMERGENCY AND OVERPRESSURE.

IN CASE OF OVERPRESSURE , CELL- JACKET - GENERATOR SAFETY VALVES

IN CASE OF OVERHEATING , CELL - JACKET - GENERATOR PROBE HEAT CONTROLALSO THERMOSTATE CONTROL

INSTANT DISPLAY OF ANY FAILURE DURING OPERATION

INSTANT TRACKING AND REGISTRATION SYSTEM IN ANY FAILURE

DOORLOCK SAFETY SYSTEM OVERCURRENT CONTROL

DISPLAY THE OPERATIONS BEING NEGATIVE IN CASE OF STEM , VACUUM OR AIR LEAK-HEAT LOSS

STOP WARNING IN CASE OF POWER OR WATER CUT DURING OPERATION

THERMIC AND FUSE RELAYS WHICH PROTECT THE SHORT CICUIT AND LEAK OF ELECTRICAL CURRENT

PROGRAMMATIC AND MECHANICAL SYSTEM THAT PREVENT THE DOORS'OPENING WHEN THE PRESSURE IN THE CELL IS OVER 0.50 mBAR

ELECTRICAL PROPERTIES

220/380-400 V 50 HZ

EN 60601-1-2

EN1010-1

EN 61010-2-040

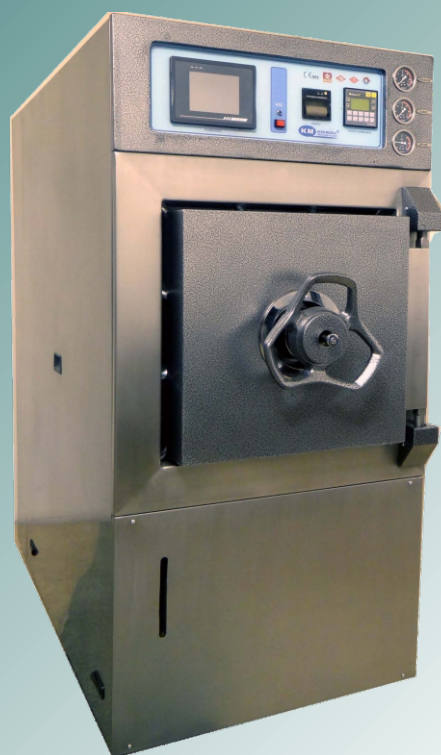
EN 61326-1997

EN 60204-1

MANUFACTURED BASED ON THE STANDARDS ABOVE BY RECEIVING TEST CERTIFICATES

KM-V67

SINGLE HINGED DOOR



KM-V67 DEVICE MEASUREMENTS AND WEIGHT

	LITER	STU	EXTERIOR DIMENSIONS (cm)	INTERIOR DIMENSIONS (cm)	WEIGHT
KM-V67	350 L	4	67x67x78	W 100 D 130 H 185	600 kg
KM-V67	470 L	6	67x67x105	W 100 D 138 H 185	800 kg
KM-V67	600 L	8	67x67x134	W 100 D 166 H 185	1030 kg
KM-V67	700 L	10	67x67x156	W 100 D 206 H 185	1170 kg
KM-V67	800 L	10	67x67x179	W 100 D 215 H 185	1280 kg
KM-V67	965 L	14	67x67x215	W 100 D 265 H 185	1390 kg

KM-V67 GENERAL SPESIFICATIONS

DOOR FEATURES

DOOR TYPE: SINGLE HINGED DOOR.

THICKNESS: 16 MM - 18 MM - 20 MM

LOCK SYSTEM : MECHANICAL LOCK SYSTEM

SEALING: SILICONE SEALING RING RESISTANT TO STERILIZATION TEMPERATURE, ACID AND CHEMICALS

DOORLOCK SYSTEM : MANUEL

DOORLOCK SAFETY : DOOR SAFETY CONTROL AGAINST OVERHEATING AND OBJECTS

CELL AND JACKET FEATURES

DESIGNED ACCORDING TO EN ISO 13485:2003 STAND AND 93/42/AT (93/42/EEC) MEDICAL DEVICES REGULATIONS

CELL 6 MM AND JACKET 3.5 MM MANUFACTURE WITH AISI 316L-316 TI HIGH QUALITY STAINLESS MATERIAL

RECTANGULAR PRISM SHAPED, CLEANED AGAINST CORROSION

ISOLATED WITH NONCARCINOGEN (CFC) AND HEAT-RESISTANT MATERIAL TO PREVENT HEAT LOSS IN THE CELL AND JACKET AND TO INCREASE THE TEMPERATURE

PRESSURE AND TEMPERATURE SENSOR INPUTS ARE AVAILABLE TO TEST THE CELL AND JACKET MEASUREMENT PROCESS

THE CONTROL OF CELL WELDING PROCESS IS TESTED WITH X-RAY WELDING MACHINE

THE CELL HAS BEEN CERTIFIED BY TURK LOYDU AND TSE BY TESTING.

DISPLAY SEPESICIFATIONS

CE CERTIFICATED

PROGRAMS ARE DESIGNED ACCORDING TO EN 285 STANDARS

DISPLAY TYPE: COLORED TOUCHSCREEN - TOUCHSCREEN WITH BUTTONS

SCREEN SIZE :DESIGNED ACCORDING TO THE DEVICE MODEL (3.5 - 5.7 - 7 - 10 INCHES)

SUPPLY: 24VDC

TFT LCD - CSTNLCD - HMI GRAPHIC - 256 RANK 1024 SCREEN RESOLUTION

USB STICK USE FORPROGRAM LODING ANDFAILURE LOGGIND

BORCODE READER SYSTEM

RS 232 PORT - RS 485 PORT - USB - SD KART - ETHERNET - GPRS MODUL - FAX MODEM CONNECTION PROPERTIES

DISPLAY PRAMETERS

DIGITAL AND GRAPHICS PREVIEW OF INSTANT HEAT AND PRESSURE

FAULT TRACKING AND EASY TO FIND FAUNT PROGRAM

DATE & TIME , SYSTEMATIC SETUP MENU

ANIMATION PREVIEW OF DEVICE OPERATION

UPDATED TIME & DATE

INSTANT TRACKING OF OPERATION STAGES

IN CASE OF FAULT AUDIBLE AND VISUAL WARNING IN THE SCREEN

PRINT FACILITY OF COMPLETED WORKS

SYSTEM TRACKING PROGRAM

WARNING OF PERIODIC MAINTENANCE

SECURITY PASSWORD TO PREVENT UNAUTHORIZED ENTRY

OPERATIN CYCLE TRACKING

REVIEW OF THE PROGRAMS'S NAME AND THE STERILIZATOR VALUES

PERSINAL PROGRAM USE

POSITION OF THE DOORS (OPEN/CLOSED)

SAFETY FEATURES

ON / OFF BUTTON WHICH IS USED FOR THE CONTROL OF ELECTRIC ENERGY

EMEGENCY STOP BUTTON WHICH STOP THE OPERATION AND EVACUATE THE PRESSURE IN CASE OF AN EMERGENCY AND OVERPRESSURE.

IN CASE OF OVERPRESSURE , CELL- JACKET - GENERATOR SAFETY VALVES

IN CASE OF OVERHEATING , CELL - JACKET - GENERATOR PROBE HEAT CONTROLALSO THERMOSTATE CONTROL

INSTANT DISPLAY OF ANY FAILURE DURING OPERATION

INSTANT TRACKING AND REGISTRATION SYSTEM IN ANY FAILURE

DOORLOCK SAFETY SYSTEM OVERCURRENT CONTROL

DISPLAY THE OPERATIONS BEING NEGATIVE IN CASE OF STEM , VACUUM OR AIR LEAK-HEAT LOSS

STOP WARNING IN CASE OF POWER OR WATER CUT DURING OPERATION

THERMIC AND FUSE RELAYS WHICH PROTECT THE SHORT CICUIT AND LEAK OF ELECTRICAL CURRENT

PROGRAMMATIC AND MECHANICAL SYSTEM THAT PREVENT THE DOORS'OPENING WHEN THE PRESSURE IN THE CELL IS OVER 0.50 mBAR

ELECTRICAL PROPERTIES

220/380-400 V 50 HZ

EN 60601-1-2

EN1010-1

EN 61010-2-040

EN 61326-1997

EN 60204-1

MANUFACTURED BASED ON THE STANDARDS ABOVE BY RECEIVING TEST CERTIFICATES

KM-CV

DOUBLE HINGED DOOR



KM-CV DEVICE MEASUREMENTS AND WEIGHT

	LITER	STU	EXTERIOR DIMENSIONS _(cm)	INTERIOR DIMENSIONS _(cm)	WEIGHT
KM-CV	250 L	2	50x50x100	W 80 D 125 H 175	800 kg
KM-CV	422 L	6	65x65x100	W 98 D 125 H 185	1030 kg
KM-CV	560 L	8	65x65x135	W 98 D 160 H 185	1080 kg
KM-CV	650 L	10	66x66x150	W 98 D 175 H 185	1250 kg
KM-CV	750 L	14	65x65x178	W 98 D 203 H 185	1350 kg
KM-CV	850 L	12	65x65x202	W 98 D 237 H 185	1390 kg
KM-CV	920 L	14	65x65x218	W 98 D 243 H 185	1400 kg

KM-CV GENERAL SPESIFICATIONS

DOOR FEATURES

DOOR TYPE: SINGLE HINGED DOOR

THICKNESS: 16 MM - 18 MM - 20 MM

LOCK SYSTEM : MECHANICAL LOCK SYSTEM

SEALING: SILICONE SEALING RING RESISTANT TO STERILIZATION TEMPERATURE, ACID AND CHEMICALS

DOORLOCK SYSTEM : MANUEL

DOORLOCK SAFETY : DOOR SAFETY CONTROL AGAINST OVERHEATING AND OBJECTS

CELL AND JACKET FEATURES

DESIGNED ACCORDING TO EN ISO 13485:2003 STAND AND 93/42/AT (93/42/EEC) MEDICAL DEVICES REGULATIONS

CELL 6 MM AND JACKET 3.5 MM MANUFACTURE WITH AISI 316L-316 TI HIGH QUALITY STAINLESS MATERIAL

RECTANGULAR PRISM SHAPED, CLEANED AGAINST CORROSION

ISOLATED WITH NONCARCINOGEN (CFC) AND HEAT-RESISTANT MATERIAL TO PREVENT HEAT LOSS IN THE CELL AND JACKET AND TO INCREASE THE TEMPERATURE

PRESSURE AND TEMPERATURE SENSOR INPUTS ARE AVAILABLE TO TEST THE CELL AND JACKET MEASUREMENT PROCESS

THE CONTROL OF CELL WELDING PROCESS IS TESTED WITH X-RAY WELDING MACHINE

THE CELL HAS BEEN CERTIFIED BY TURK LOYDU AND TSE BY TESTING.

DISPLAY SEPESICIFATIONS

CE CERTIFICATED

PROGRAMS ARE DESIGNED ACCORDING TO EN 285 STANDARS

DISPLAY TYPE: COLORED TOUCHSCREEN - TOUCHSCREEN WITH BUTTONS

SCREEN SIZE : DESIGNED ACCORDING TO THE DEVICE MODEL (3.5 - 5.7 - 7 - 10 INCHES)

SUPPLY: 24VDC

TFT LCD - CSTNLCD - HMI GRAPHIC - 256 RANK 1024 SCREEN RESOLUTION

USB STICK USE FORPROGRAM LODING ANDFAILURE LOGGIND

BORCODE READER SYSTEM

RS 232 PORT - RS 485 PORT - USB - SD KART - ETHERNET - GPRS MODUL - FAX MODEM CONNECTION PROPERTIES

DISPLAY PRAMETERS

DIGITAL AND GRAPHICS PREVIEW OF INSTANT HEAT AND PRESSURE

FAULT TRACKING AND EASY TO FIND FAUNT PROGRAM

DATE & TIME , SYSTEMATIC SETUP MENU

ANIMATION PREVIEW OF DEVICE OPERATION

UPDATED TIME & DATE

INSTANT TRACKING OF OPERATION STAGES

IN CASE OF FAULT AUDIBLE AND VISUAL WARNING IN THE SCREEN

PRINT FACILITY OF COMPLETED WORKS

SYSTEM TRACKING PROGRAM

WARNING OF PERIODIC MAINTENANCE

SECURITY PASSWORD TO PREVENT UNAUTHORIZED ENTRY

OPERATIN CYCLE TRACKING

REVIEW OF THE PROGRAMS'S NAME AND THE STERILIZATOR VALUES

PERSINAL PROGRAM USE

POSITION OF THE DOORS (OPEN/CLOSED)

SAFETY FEATURES

ON / OFF BUTTON WHICH IS USED FOR THE CONTROL OF ELECTRIC ENERGY

EMEGENCY STOP BUTTON WHICH STOP THE OPERATION AND EVACUATE THE PRESSURE IN CASE OF AN EMERGENCY AND OVERPRESSURE.

IN CASE OF OVERPRESSURE , CELL- JACKET - GENERATOR SAFETY VALVES

IN CASE OF OVERHEATING , CELL - JACKET - GENERATOR PROBE HEAT CONTROLALSO THERMOSTATE CONTROL

INSTANT DISPLAY OF ANY FAILURE DURING OPERATION

INSTANT TRACKING AND REGISTRATION SYSTEM IN ANY FAILURE

DOORLOCK SAFETY SYSTEM OVERCURRENT CONTROL

DISPLAY THE OPERATIONS BEING NEGATIVE IN CASE OF STEM , VACUUM OR AIR LEAK-HEAT LOSS

STOP WARNING IN CASE OF POWER OR WATER CUT DURING OPERATION

THERMIC AND FUSE RELAYS WHICH PROTECT THE SHORT CICUIT AND LEAK OF ELECTRICAL CURRENT

PROGRAMMATIC AND MECHANICAL SYSTEM THAT PREVENT THE DOORS'OPENING WHEN THE PRESSURE IN THE CELL IS OVER 0.50 mBAR

ELECTRICAL PROPERTIES

220/380-400 V 50 HZ

EN 60601-1-2

EN1010-1

EN 61010-2-040

EN 61326-1997

EN 60204-1

MANUFACTURED BASED ON THE STANDARDS ABOVE BY RECEIVING TEST CERTIFICATES

KM-CV67

DOUBLE HINGED DOOR



KM-CV67 DEVICE MEASUREMENTS AND WEIGHT

	LITER	STU	EXTERIOR DIMENSIONS(cm)	INTERIOR DIMENSIONS(cm)	WEIGHT
KM-CV67	350 L	2	67x67x78	W 100 D 103 H 185	800 kg
KM-CV67	470 L	6	67x67x105	W 100 D 130 H 185	1030 kg
KM-CV67	600 L	8	67x67x134	W 100 D 159 H 185	1180 kg
KM-CV67	700 L	10	67x67x156	W 100 D 181 H 185	1250 kg
KM-CV67	800 L	14	67x67x179	W 100 D 204 H 185	1350 kg
KM-CV67	965 L	12	67x67x202	W 100 D 227 H 185	1390 kg
KM-CV67	920 L	14	65x65x215	W 100 D 240 H 185	1400 kg

KM-CV67 GENERAL SPESIFICATIONS

DOOR FEATURES

DOOR TYPE: DOUBLE HINGED DOOR

THICKNESS: 16 MM - 18 MM - 20 MM

LOCK SYSTEM : MECHANICAL SYSTEMS LOCK is

SEALING: SILICONE SEALING RING RESISTANT TO STERILIZATION TEMPERATURE, ACID AND CHEMICALS

DOORLOCK SYSTEM : MANUEL

DOORLOCK SAFETY : DOOR SAFETY CONTROL AGAINST OVERHEATING AND OBJECTS

CELL AND JACKET FEATURES

DESIGNED ACCORDING TO EN ISO 13485:2003 STAND AND 93/42/AT (93/42/EEC) MEDICAL DEVICES REGULATIONS

CELL 6 MM AND JACKET 3.5 MM MANUFACTURE WITH AISI 316L-316 TI HIGH QUALITY STAINLESS MATERIAL

RECTANGULAR PRISM SHAPED, CLEANED AGAINST CORROSION

ISOLATED WITH NONCARCINOGEN (CFC) AND HEAT-RESISTANT MATERIAL TO PREVENT HEAT LOSS IN THE CELL AND JACKET AND TO INCREASE THE TEMPERATURE

PRESSURE AND TEMPERATURE SENSOR INPUTS ARE AVAILABLE TO TEST THE CELL AND JACKET MEASUREMENT PROCESS

THE CONTROL OF CELL WELDING PROCESS IS TESTED WITH X-RAY WELDING MACHINE

THE CELL HAS BEEN CERTIFIED BY TURK LOYDU AND TSE BY TESTING.

DISPLAY SEPESICIFATIONS

CE CERTIFICATED

PROGRAMS ARE DESIGNED ACCORDING TO EN 285 STANDARS

DISPLAY TYPE: COLORED TOUCHSCREEN - TOUCHSCREEN WITH BUTTONS

SCREEN SIZE :DESIGNED ACCORDING TO THE DEVICE MODEL (3.5 - 5.7 - 7 - 10 INCHES)

SUPPLY: 24VDC

TFT LCD - CSTNLCD - HMI GRAPHIC - 256 RANK 1024 SCREEN RESOLUTION

USB STICK USE FORPROGRAM LODING ANDFAILURE LOGGIND

BORCODE READER SYSTEM

RS 232 PORT - RS 485 PORT - USB - SD KART - ETHERNET - GPRS MODUL - FAX MODEM CONNECTION PROPERTIES

DISPLAY PRAMETERS

DIGITAL AND GRAPHICS PREVIEW OF INSTANT HEAT AND PRESSURE

FAULT TRACKING AND EASY TO FIND FAUNT PROGRAM

DATE & TIME , SYSTEMATIC SETUP MENU

ANIMATION PREVIEW OF DEVICE OPERATION

UPDATED TIME & DATE

INSTANT TRACKING OF OPERATION STAGES

IN CASE OF FAULT AUDIBLE AND VISUAL WARNING IN THE SCREEN

PRINT FACILITY OF COMPLETED WORKS

SYSTEM TRACKING PROGRAM

WARNING OF PERIODIC MAINTENANCE

SECURITY PASSWORD TO PREVENT UNAUTHORIZED ENTRY

OPERATIN CYCLE TRACKING

REVIEW OF THE PROGRAMS'S NAME AND THE STERILIZATOR VALUES

PERSINAL PROGRAM USE

POSITION OF THE DOORS (OPEN/CLOSED)

SAFETY FEATURES

ON / OFF BUTTON WHICH IS USED FOR THE CONTROL OF ELECTRIC ENERGY

EMEGENCY STOP BUTTON WHICH STOP THE OPERATION AND EVACUATE THE PRESSURE IN CASE OF AN EMERGENCY AND OVERPRESSURE.

IN CASE OF OVERPRESSURE , CELL- JACKET - GENERATOR SAFETY VALVES

IN CASE OF OVERHEATING , CELL - JACKET - GENERATOR PROBE HEAT CONTROLALSO THERMOSTATE CONTROL

INSTANT DISPLAY OF ANY FAILURE DURING OPERATION

INSTANT TRACKING AND REGISTRATION SYSTEM IN ANY FAILURE

DOORLOCK SAFETY SYSTEM OVERCURRENT CONTROL

DISPLAY THE OPERATIONS BEING NEGATIVE IN CASE OF STEM , VACUUM OR AIR LEAK-HEAT LOSS

STOP WARNING IN CASE OF POWER OR WATER CUT DURING OPERATION

THERMIC AND FUSE RELAYS WHICH PROTECT THE SHORT CICUIT AND LEAK OF ELECTRICAL CURRENT

PROGRAMMATIC AND MECHANICAL SYSTEM THAT PREVENT THE DOORS'OPENING WHEN THE PRESSURE IN THE CELL IS OVER 0.50 mBAR

ELECTRICAL PROPERTIES

220/380-400 V 50 HZ

EN 60601-1-2

EN1010-1

EN 61010-2-040

EN 61326-1997

EN 60204-1

MANUFACTURED BASED ON THE STANDARDS ABOVE BY RECEIVING TEST CERTIFICATES

KM-D

VERTICAL HINGED DOOR



KM-D DEVICE MEASUREMENTS AND WEIGHT

KM-D	LITER 75 L	STU 1	EXTERIOR DIMENSIONS _(cm) 40X60	INTERIOR DIMENSIONS _(cm) W 95 D 70 H 100	WEIGHT 220 kg
------	---------------	----------	--	--	------------------

KM-D GENERAL SPESIFICATIONS

DOOR FEATURES

DOOR TYPE: SINGLE HINGED DOOR

THICKNESS: 16 MM - 18 MM - 20 MM

LOCK SYSTEM : MECHANICAL LOCK SYSTEM

SEALING: SILICONE SEALING RING RESISTANT TO STERILIZATION TEMPERATURE, ACID AND CHEMICALS

DOORLOCK SYSTEM : MANUEL

DOORLOCK SAFETY : DOOR SAFETY CONTROL AGAINST OVERHEATING AND OBJECTS

CELL AND JACKET FEATURES

DESIGNED ACCORDING TO EN ISO 13485:2003 STAND AND 93/42/AT (93/42/EEC) MEDICAL DEVICES REGULATIONS

CELL 6 MM AND JACKET 3.5 MM MANUFACTURE WITH AISI 316L-316 TI HIGH QUALITY STAINLESS MATERIAL

RECTANGULAR PRISM SHAPED, CLEANED AGAINST CORROSION

ISOLATED WITH NONCARCINOGEN (CFC) AND HEAT-RESISTANT MATERIAL TO PREVENT HEAT LOSS IN THE CELL AND JACKET AND TO INCREASE THE TEMPERATURE

PRESSURE AND TEMPERATURE SENSOR INPUTS ARE AVAILABLE TO TEST THE CELL AND JACKET MEASUREMENT PROCESS

THE CONTROL OF CELL WELDING PROCESS IS TESTED WITH X-RAY WELDING MACHINE

THE CELL HAS BEEN CERTIFIED BY TURK LOYDU AND TSE BY TESTING.

DISPLAY SEPESICIFATIONS

CE CERTIFICATED

PROGRAMS ARE DESIGNED ACCORDING TO EN 285 STANDARS

DISPLAY TYPE: COLORED TOUCHSCREEN - TOUCHSCREEN WITH BUTTONS

SCREEN SIZE : DESIGNED ACCORDING TO THE DEVICE MODEL (3.5 - 5.7 - 7 - 10 INCHES)

SUPPLY: 24VDC

TFT LCD - CSTNLCD - HMI GRAPHIC - 256 RANK 1024 SCREEN RESOLUTION

USB STICK USE FORPROGRAM LODING ANDFAILURE LOGGIND

BORCODE READER SYSTEM

RS 232 PORT - RS 485 PORT - USB - SD KART - ETHERNET - GPRS MODUL - FAX MODEM CONNECTION PROPERTIES

DISPLAY PRAMETERS

DIGITAL AND GRAPHICS PREVIEW OF INSTANT HEAT AND PRESSURE

FAULT TRACKING AND EASY TO FIND FAUNT PROGRAM

DATE & TIME , SYSTEMATIC SETUP MENU

ANIMATION PREVIEW OF DEVICE OPERATION

UPDATED TIME & DATE

INSTANT TRACKING OF OPERATION STAGES

IN CASE OF FAULT AUDIBLE AND VISUAL WARNING IN THE SCREEN

PRINT FACILITY OF COMPLETED WORKS

SYSTEM TRACKING PROGRAM

WARNING OF PERIODIC MAINTENANCE

SECURITY PASSWORD TO PREVENT UNAUTHORIZED ENTRY

OPERATIN CYCLE TRACKING

REVIEW OF THE PROGRAMS'S NAME AND THE STERILIZATOR VALUES

PERSINAL PROGRAM USE

POSITION OF THE DOORS (OPEN/CLOSED)

SAFETY FEATURES

ON / OFF BUTTON WHICH IS USED FOR THE CONTROL OF ELECTRIC ENERGY

EMEGENCY STOP BUTTON WHICH STOP THE OPERATION AND EVACUATE THE PRESSURE IN CASE OF AN EMERGENCY AND OVERPRESSURE.

IN CASE OF OVERPRESSURE , CELL- JACKET - GENERATOR SAFETY VALVES

IN CASE OF OVERHEATING , CELL - JACKET - GENERATOR PROBE HEAT CONTROLALSO THERMOSTATE CONTROL

INSTANT DISPLAY OF ANY FAILURE DURING OPERATION

INSTANT TRACKING AND REGISTRATION SYSTEM IN ANY FAILURE

DOORLOCK SAFETY SYSTEM OVERCURRENT CONTROL

DISPLAY THE OPERATIONS BEING NEGATIVE IN CASE OF STEM , VACUUM OR AIR LEAK-HEAT LOSS

STOP WARNING IN CASE OF POWER OR WATER CUT DURING OPERATION

THERMIC AND FUSE RELAYS WHICH PROTECT THE SHORT CICUIT AND LEAK OF ELECTRICAL CURRENT

PROGRAMMATIC AND MECHANICAL SYSTEM THAT PREVENT THE DOORS'OPENING WHEN THE PRESSURE IN THE CELL IS OVER 0.50 mBAR

ELECTRICAL PROPERTIES

220/380-400 V 50 HZ

EN 60601-1-2

EN1010-1

EN 61010-2-040

EN 61326-1997

EN 60204-1

MANUFACTURED BASED ON THE STANDARDS ABOVE BY RECEIVING TEST CERTIFICATES



MADE IN TURKEY



KESİN MEDİKAL TIBBİ CİHAZ SANAYİ TİCARET LTD. ŞTİ.

İVEDİK ORGANİZE SANAYİ BÖLGESİ GÜLERYÜZ SANAYİ SİTESİ 1333.CADDE 1345 SOKAK NO:63
OSTİM- YENİMAHALLE / ANKARA- TÜRKİYE

Tel: +90 312 395 67 17 (pbx) Fax: +90 312 395 58 87
www.kesinmedikal.com.tr / info@kesinmedikal.com.tr